

Station GAW-Name: Monte Cimone  
Station GAW-ID: CMN  
Station latitude: 44.193425  
Station longitude: 10.700963  
Station altitude: 2165m  
Station land use: Remote Park  
Station setting: Mountain

Level 0 and Level 2 data

Humidity and ozone interference corrected

Some metadata missing (e.g. converter temperature)

Slight offset in NO data, start of January Please correct and resubmit.

Level 0

There are wrong flags (automatic procedure)

0.14742000 0.14768200; please change

They are probably combined (147 + 682)

please take flags from the shortlist (<https://ebas-submit.nilu.no/templates/NOx/lev0>)

Look if datapoints are still valid or nonvalid afterwards

ACTRIS DATA WS 2023/04/19



Bern

Switzerland

Milan

Turin

Ljubljana

Zagreb

Croatia

44.16667N 10.6833E

eille

Isola d'Elba

Italy

Corse (Corsica)

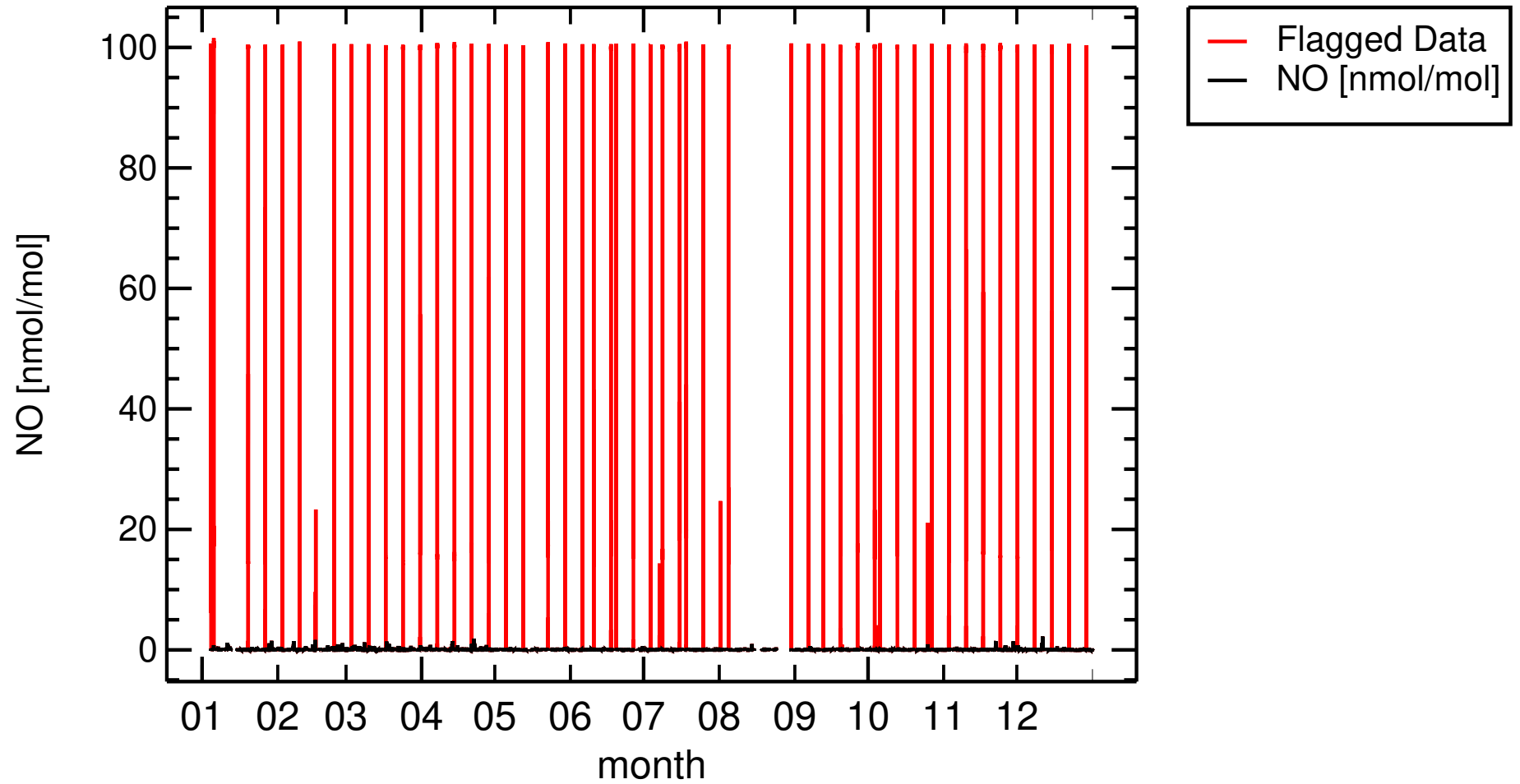
Rome

© 2020 Google  
Data SIO, NOAA, U.S. Navy, NGA, GEBCO  
ACTB/CIS DATA/ISS 2023/04/19  
Image Landsat / Copernicus  
© 2020 GeoBasis-DE/BKG

Go

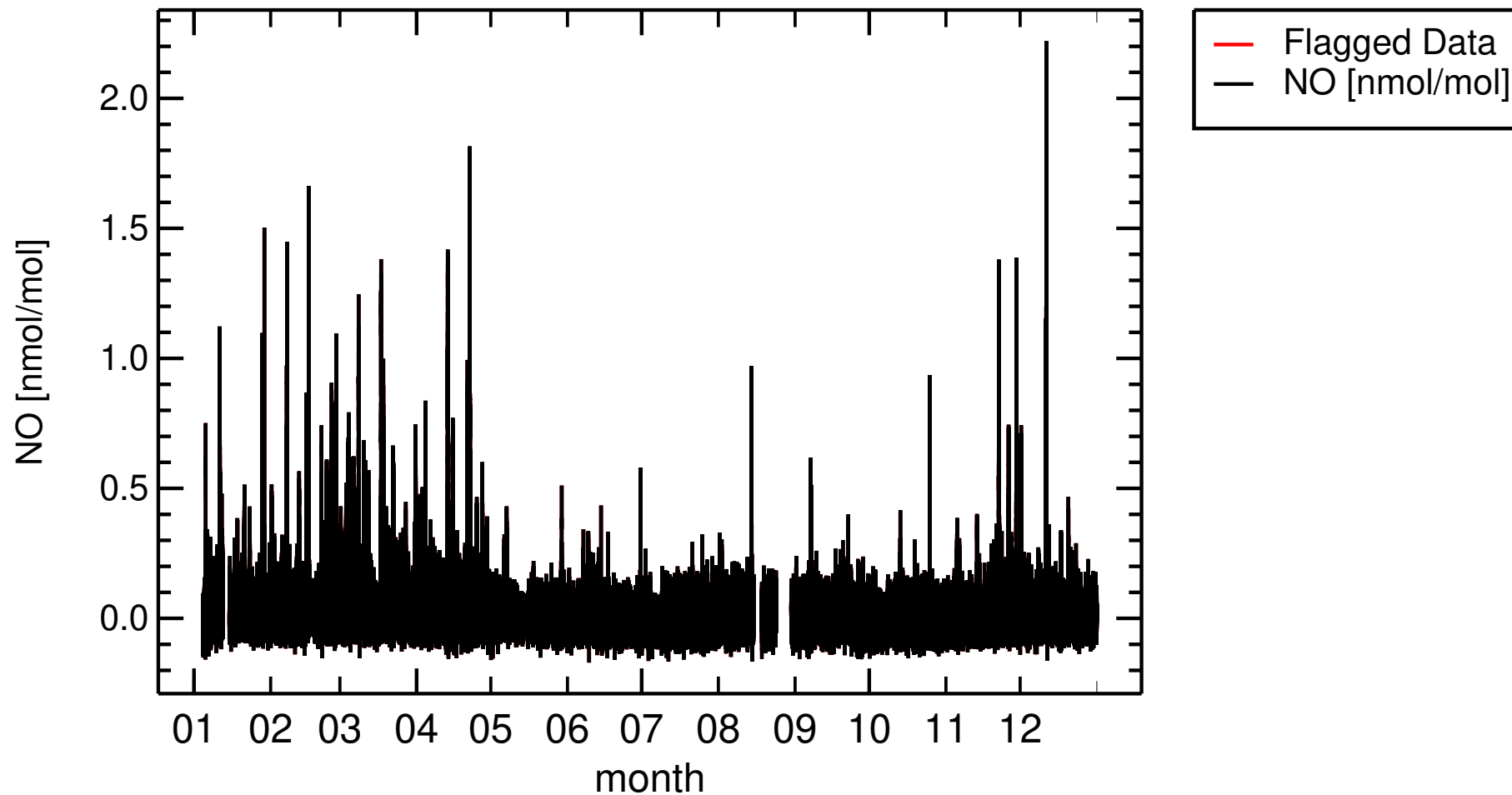
2022

IT0009R , Monte Cimone



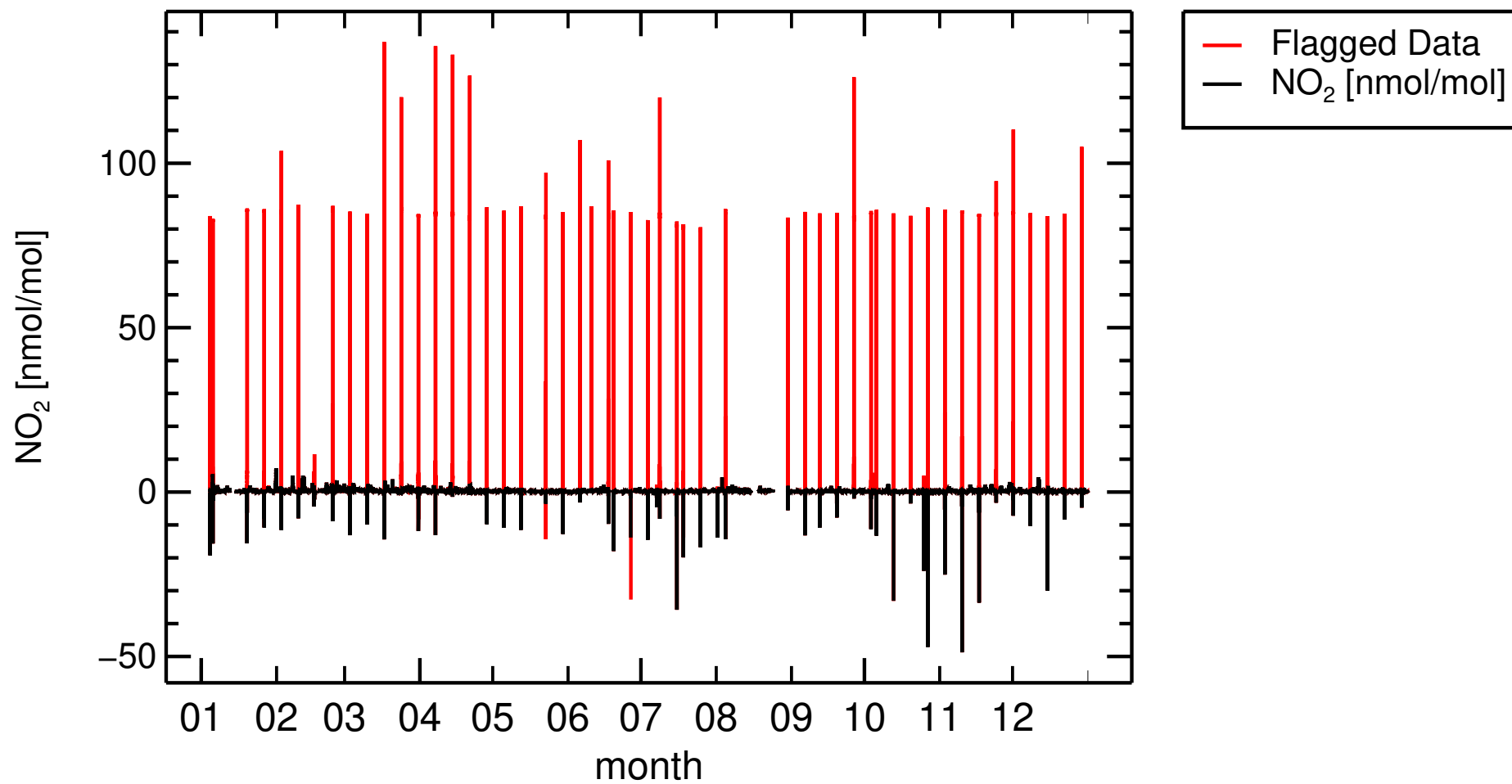
2022

IT0009R , Monte Cimone (rev.)



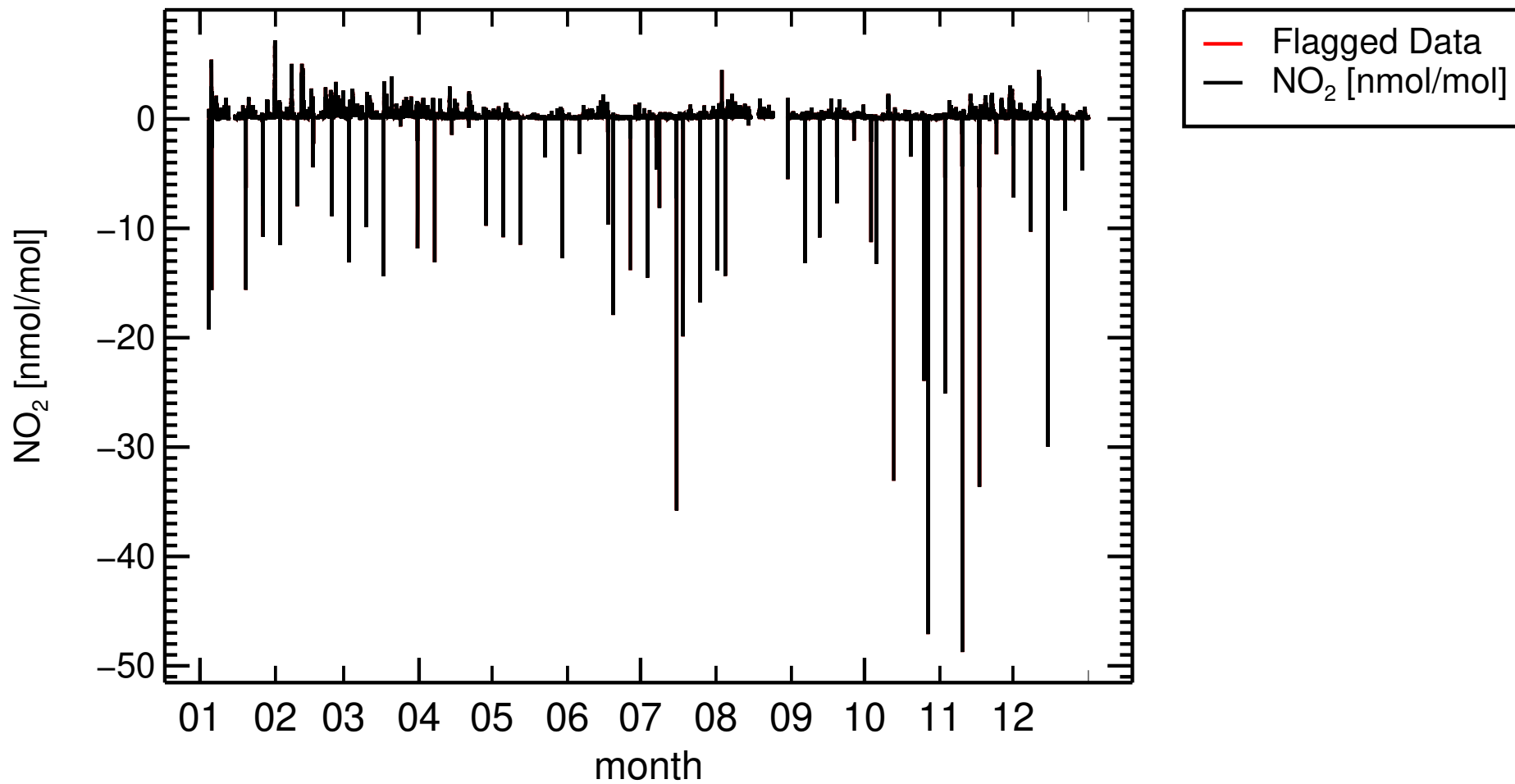
2022

IT0009R , Monte Cimone



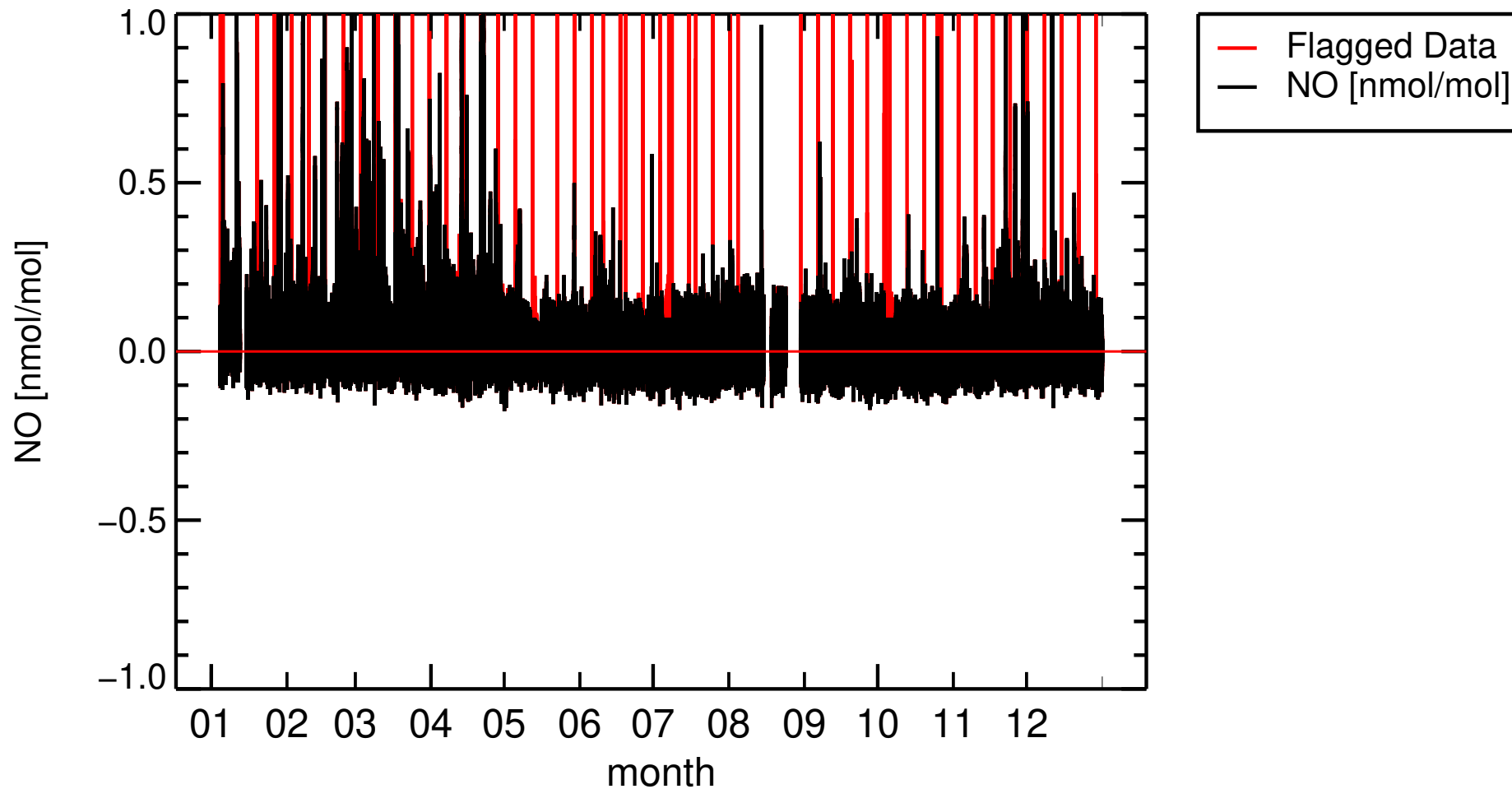
2022

IT0009R , Monte Cimone (rev.)



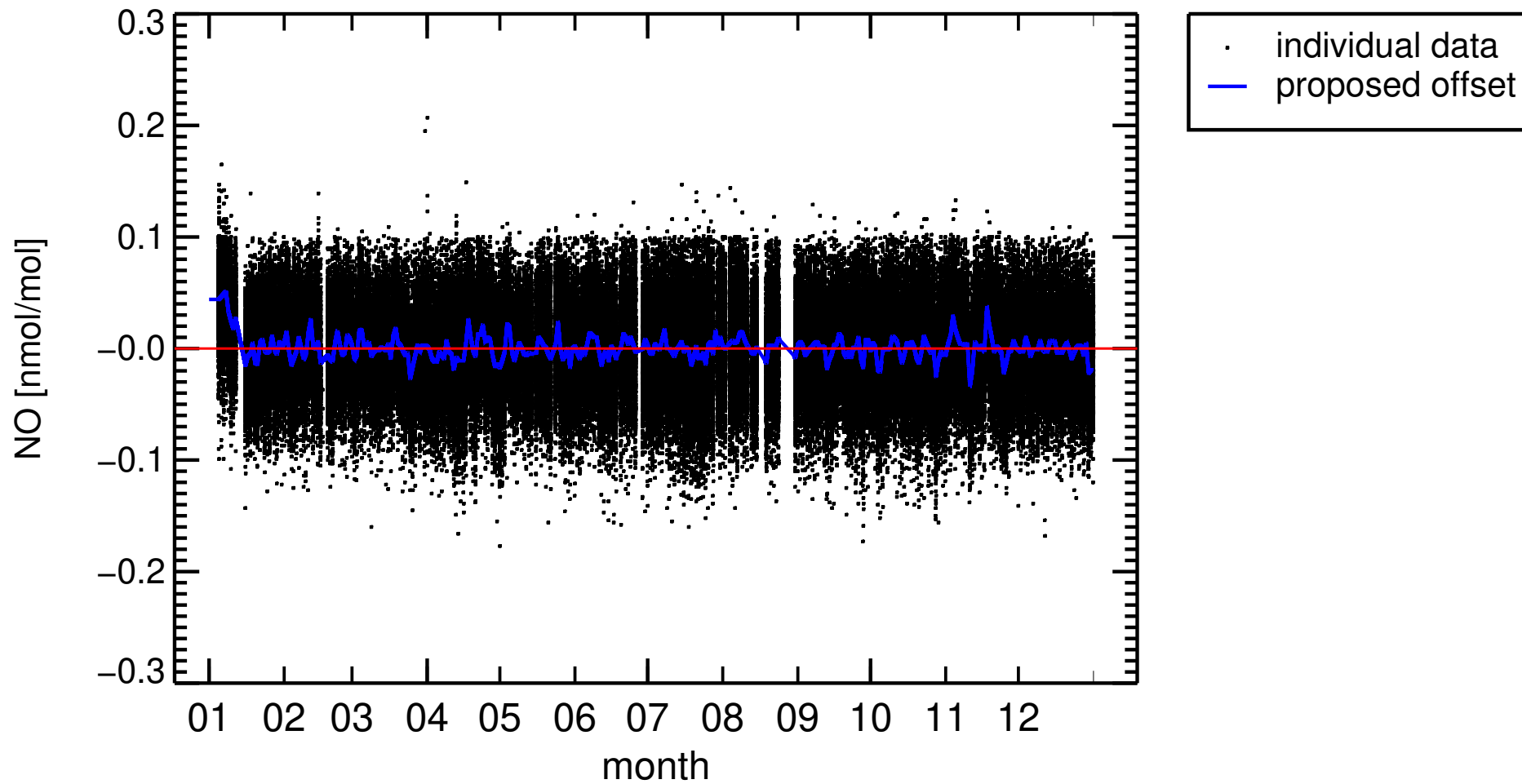
2022

IT0009R , Monte Cimone



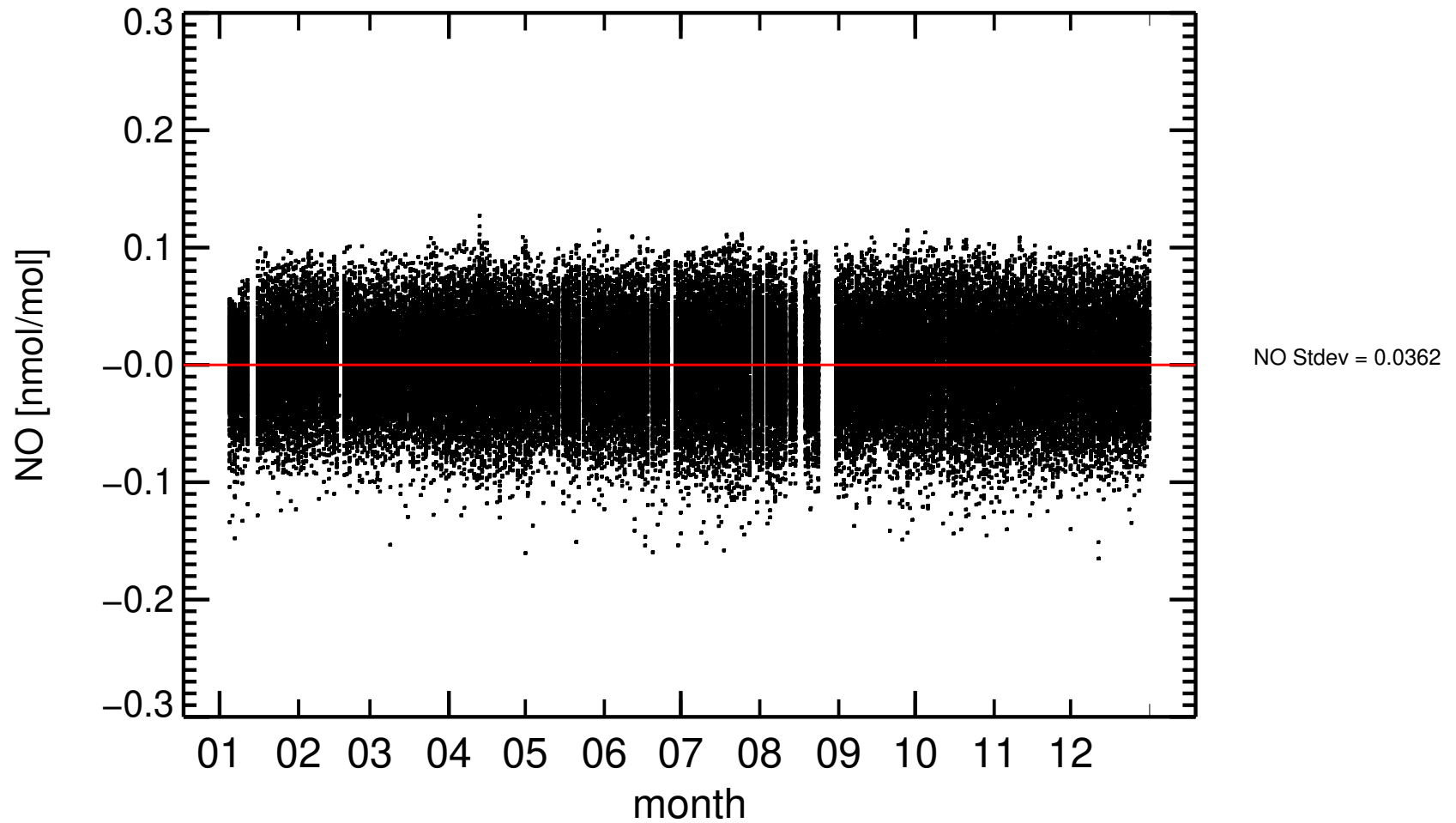
2022

IT0009R , Monte Cimone

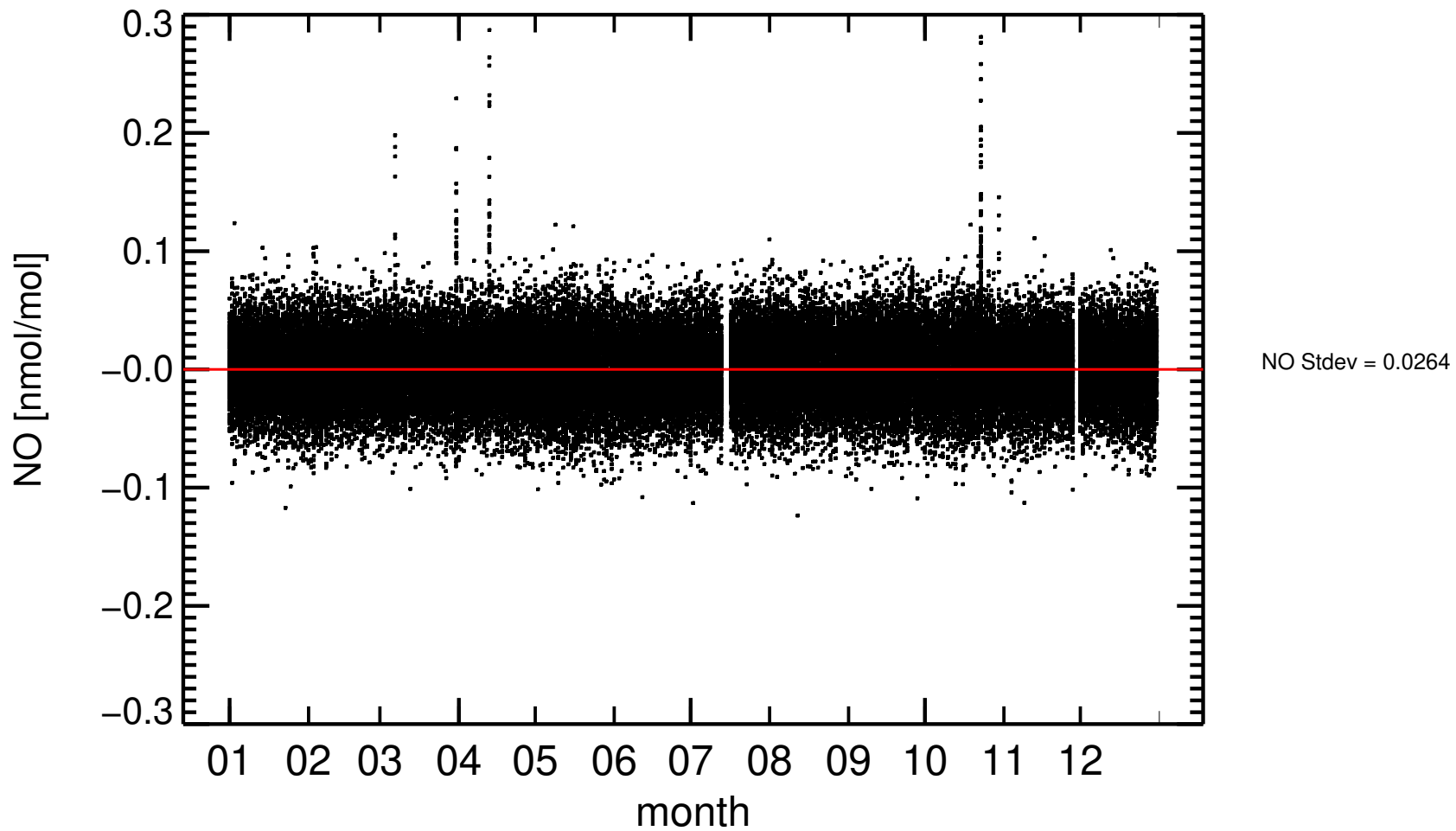




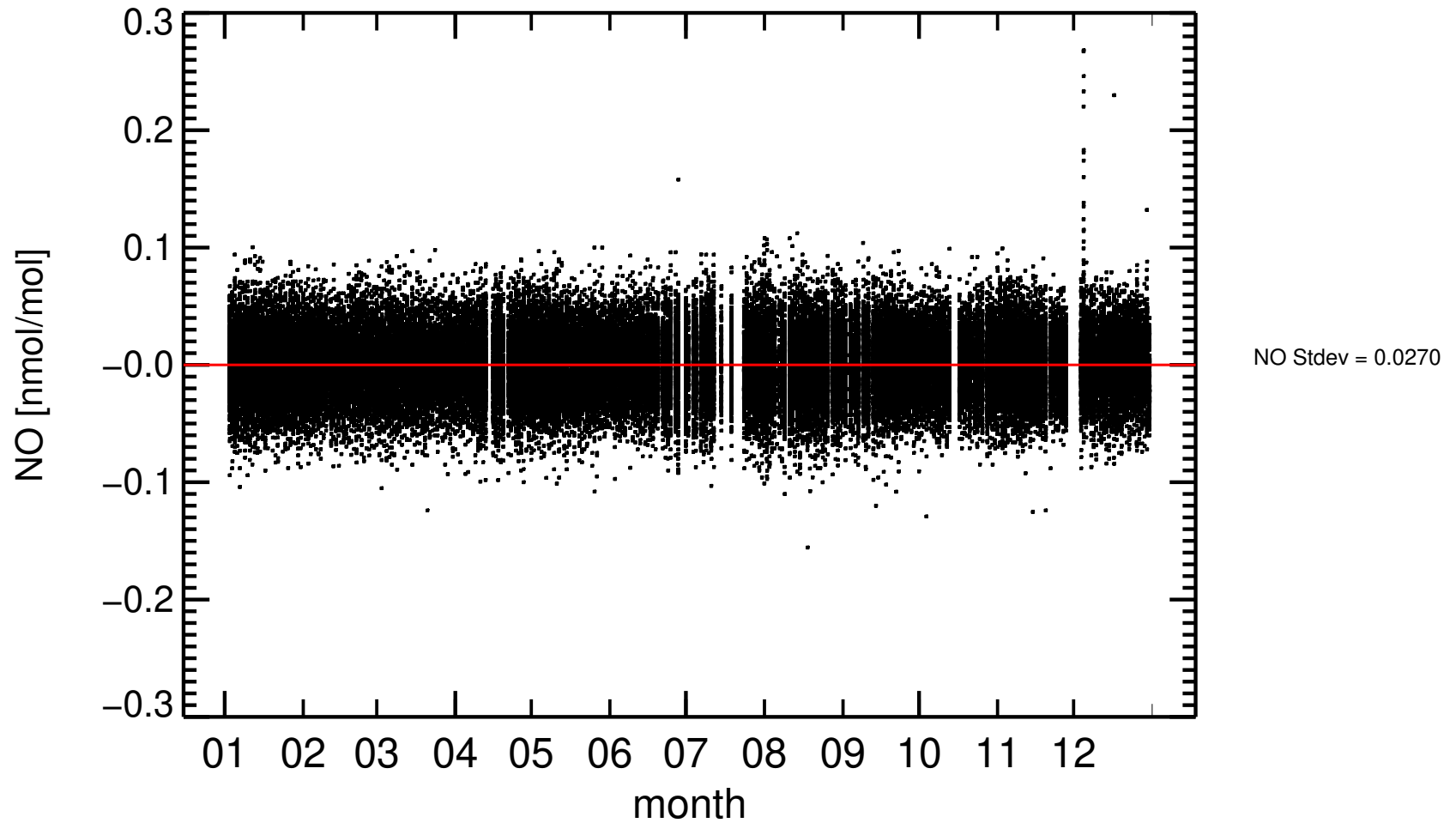
2022 , 22:00–02:00 only  
IT0009R , Monte Cimone (rev.)



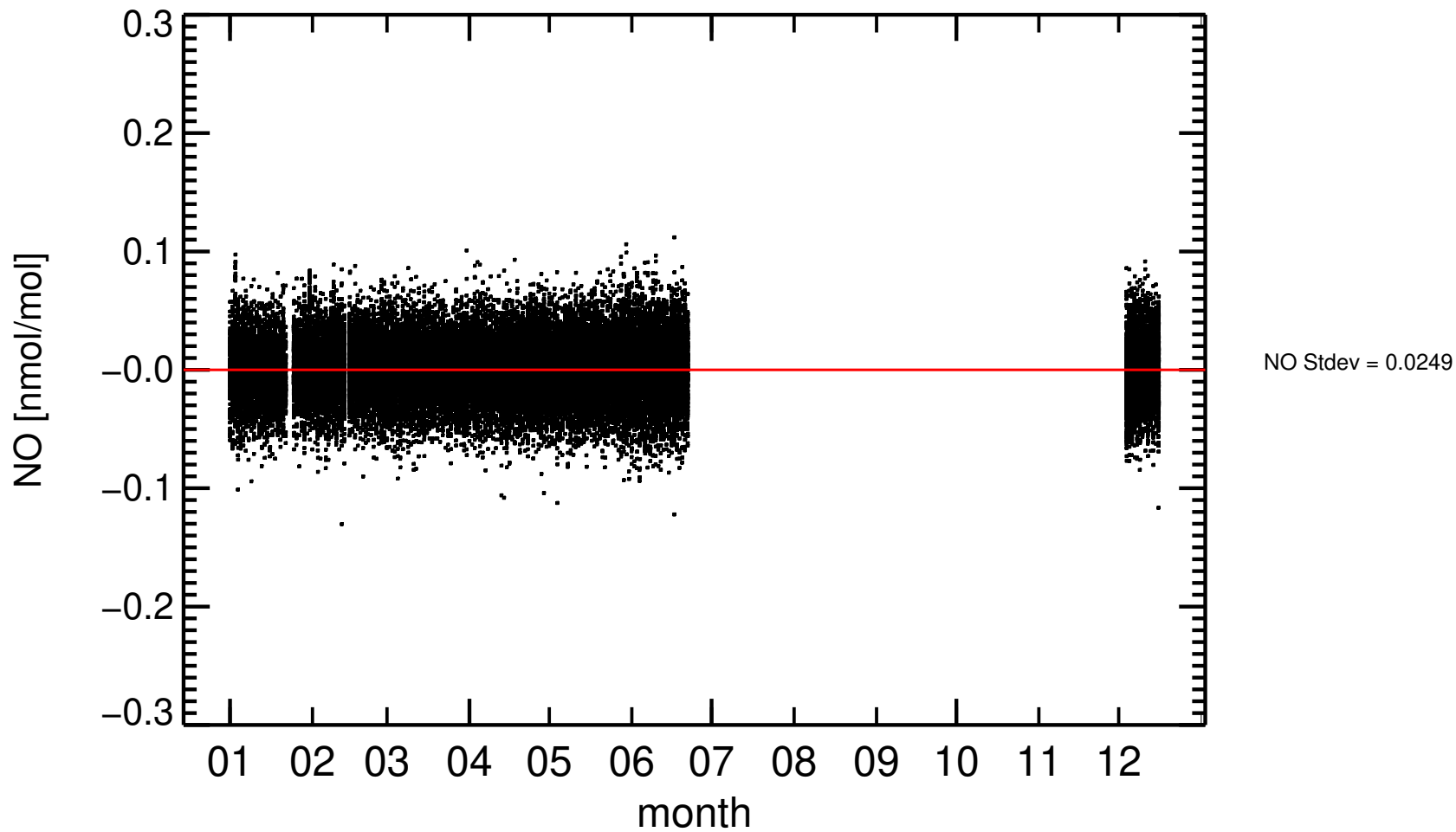
2018 , 22:00–02:00 only  
IT0009R , Monte Cimone (rev.)



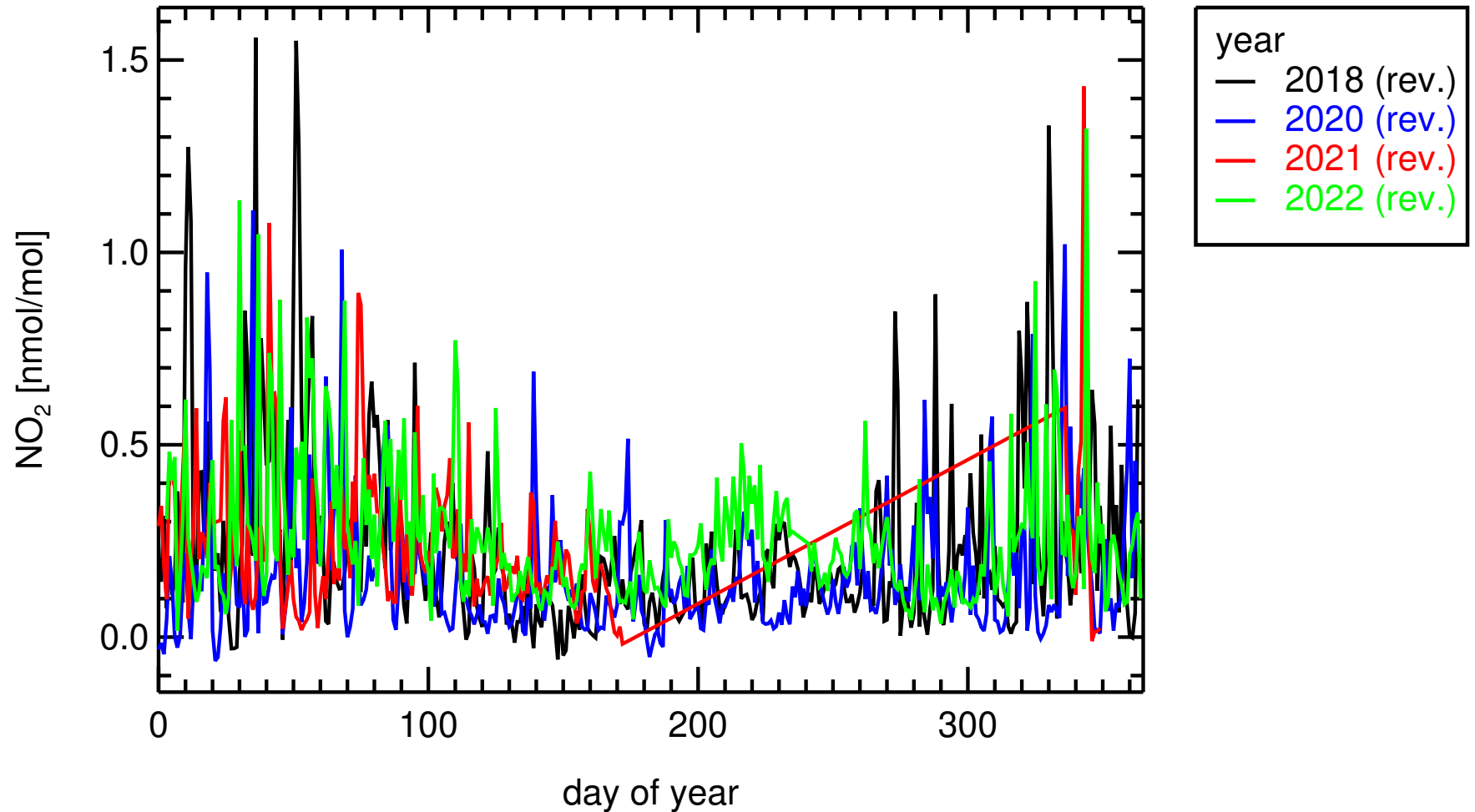
2020 , 22:00–02:00 only  
IT0009R , Monte Cimone (rev.)



2021 , 22:00–02:00 only  
IT0009R , Monte Cimone (rev.)

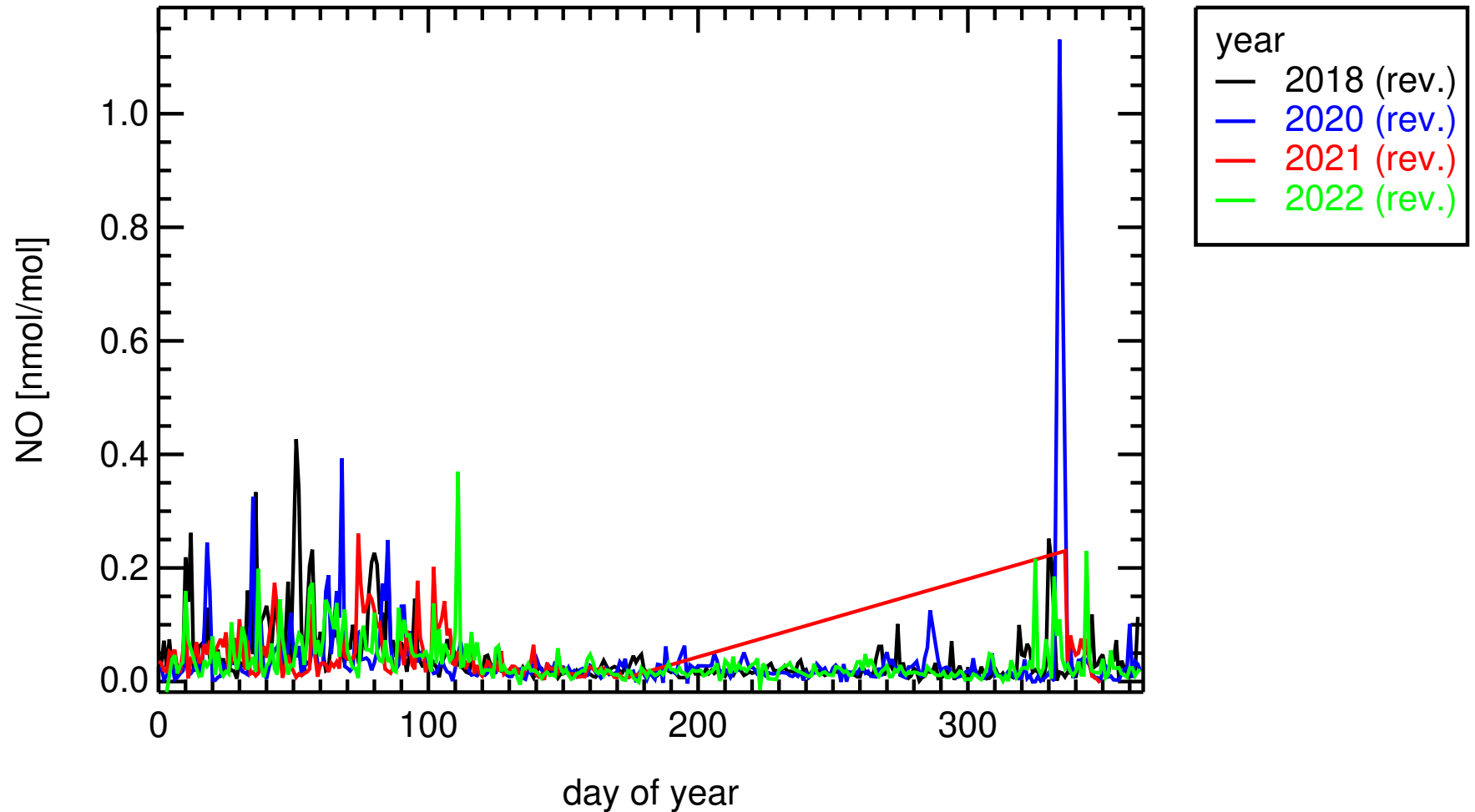


daily averages  
IT0009R , Monte Cimone



nitrogen\_dioxide, nmol/mol, Detection limit=0.16 nmol/mol MEAN = NaN nmol/mol

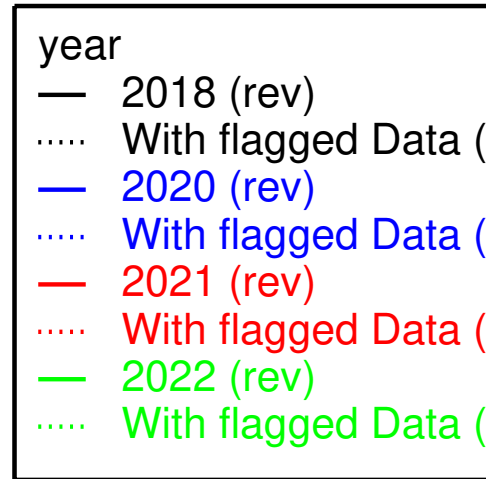
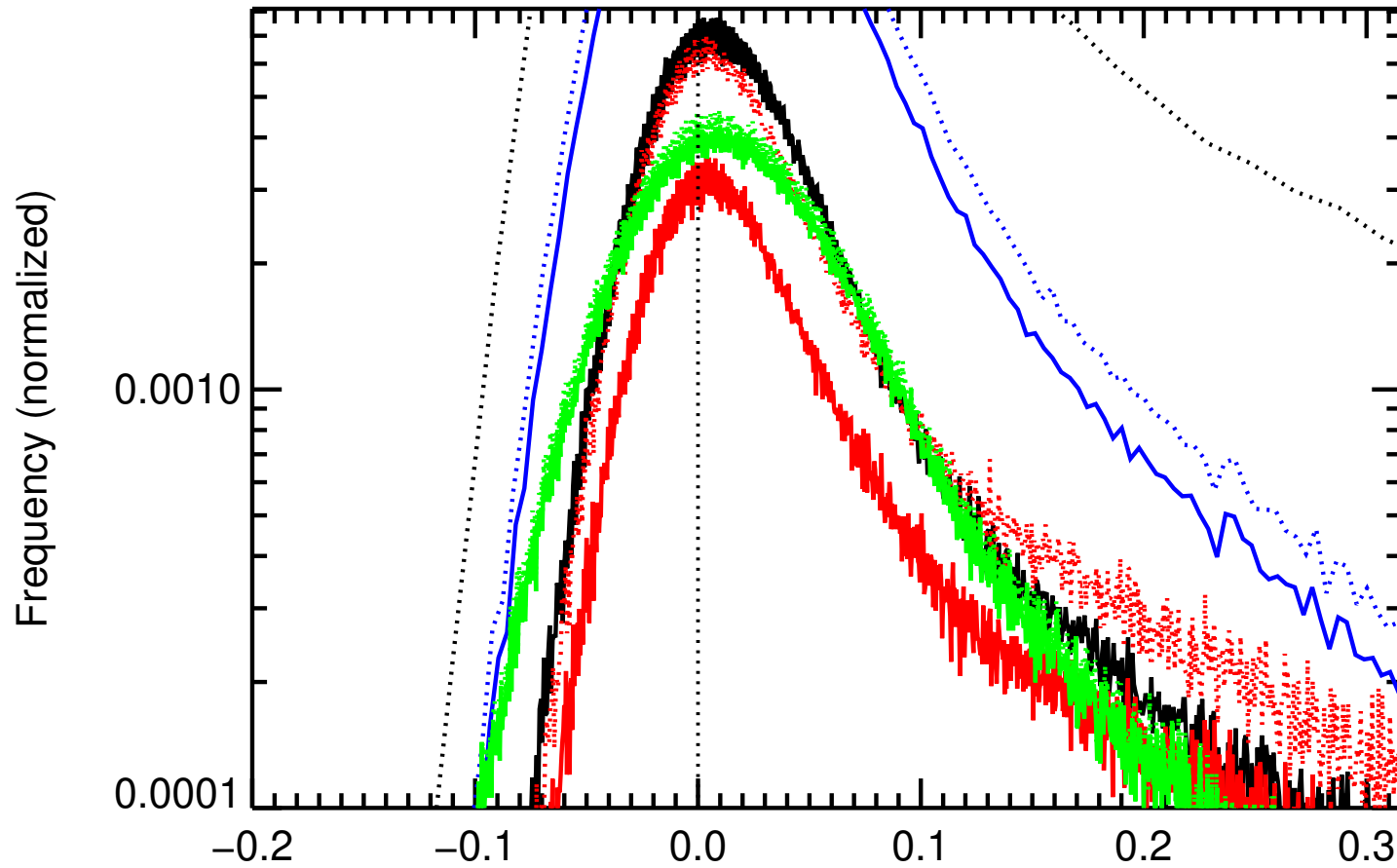
daily averages  
IT0009R , Monte Cimone



nitrogen\_monoxide, nmol/mol, Detection limit=0.10 nmol/mol MEAN = NaN nmol/mol

# Histogram

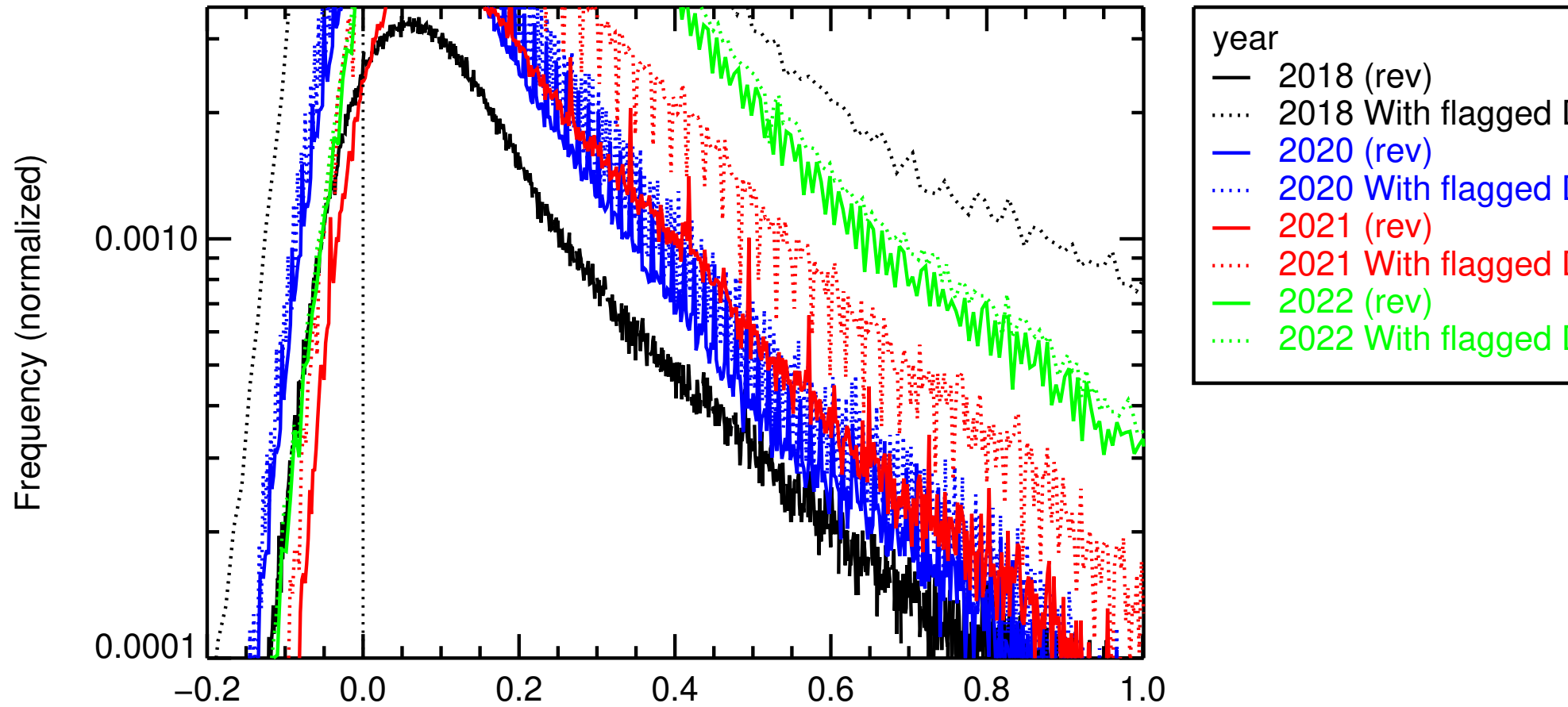
## IT0009R , Monte Cimone



nitrogen\_monoxide, nmol/mol, Method ref=IT06L\_chem\_photoly\_Thermo42iTL, Detection limit=0.05 nmol/mol [nmol/mo

# Histogram

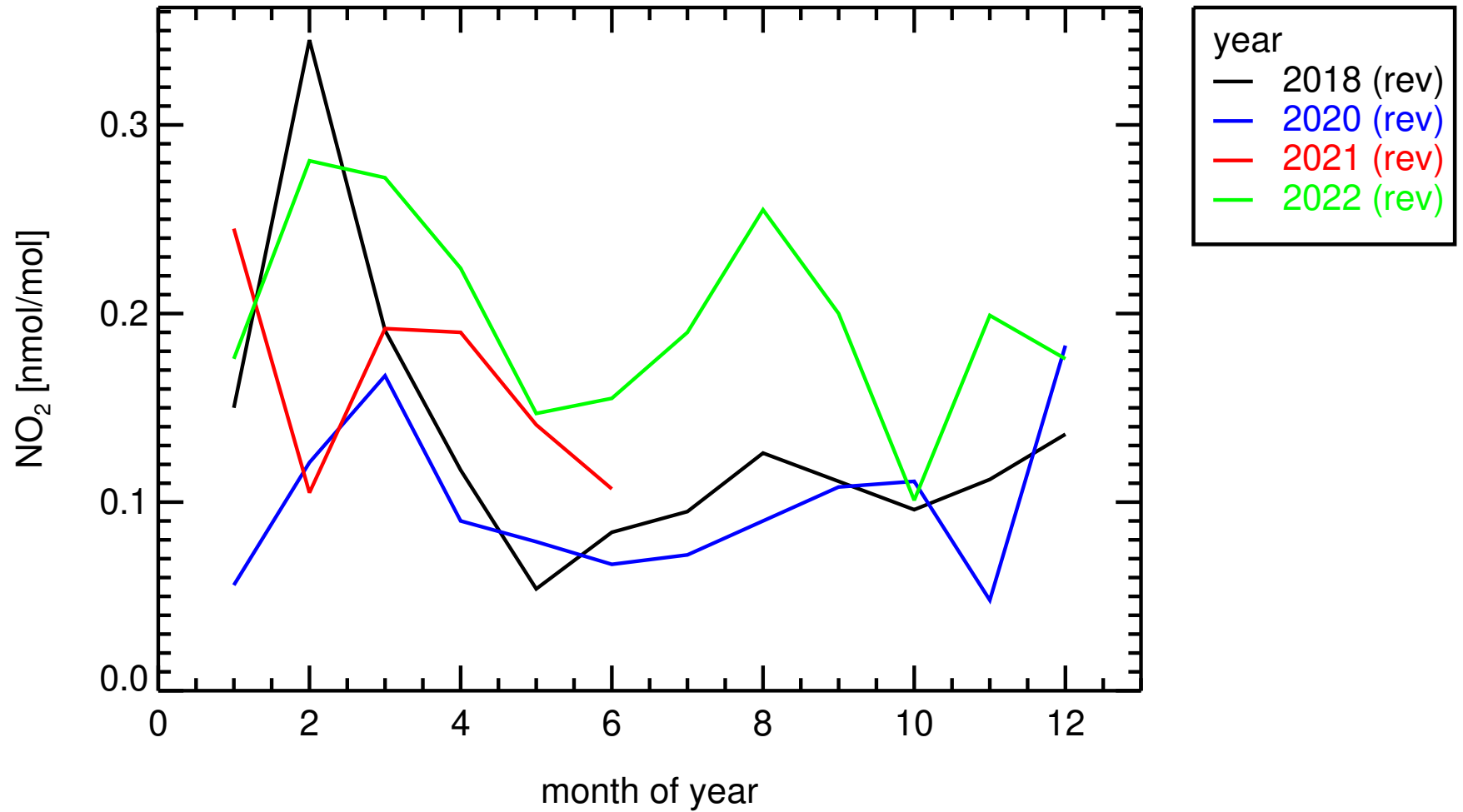
## IT0009R , Monte Cimone



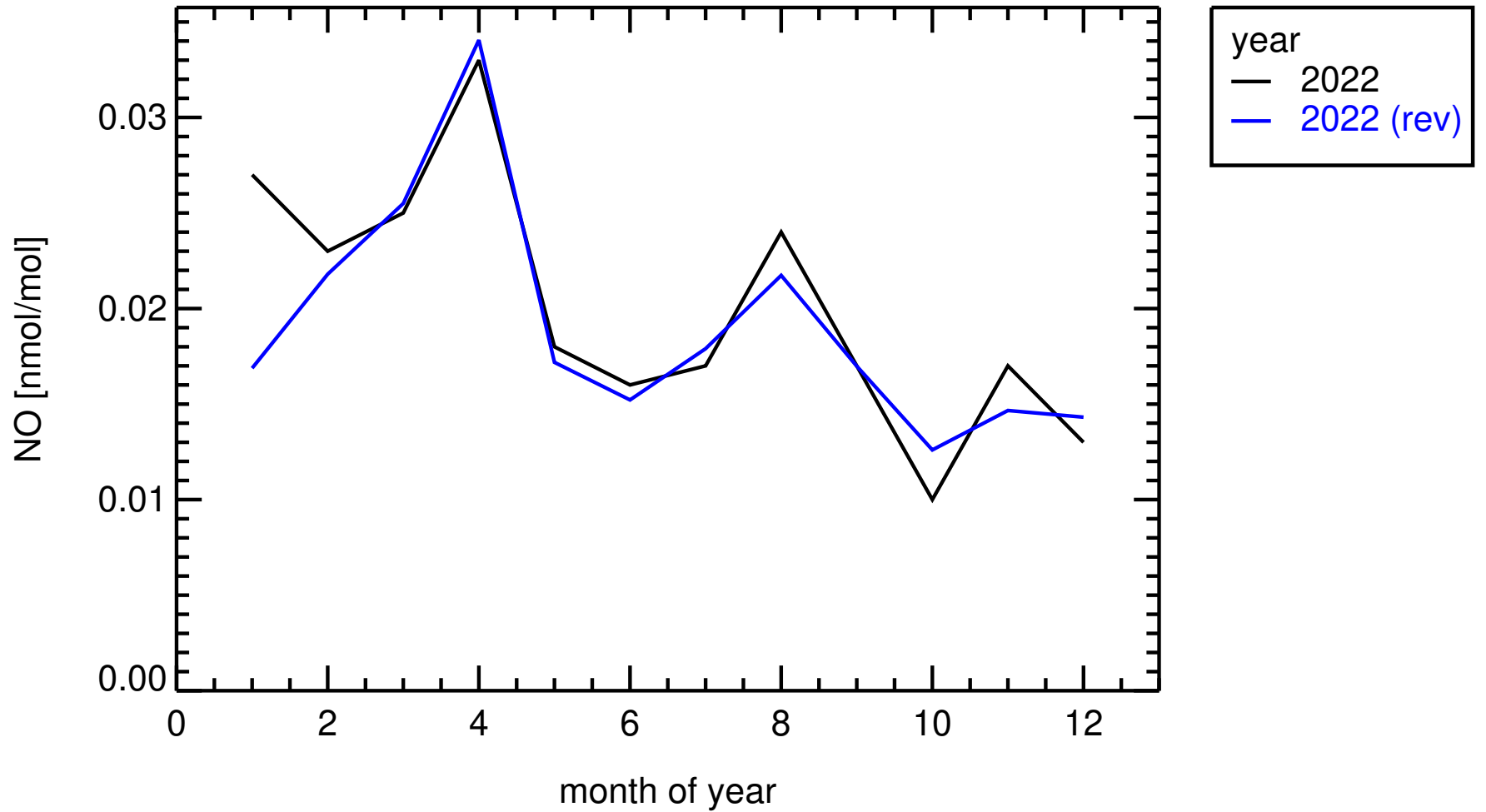
nitrogen\_dioxide, nmol/mol, Method ref=IT06L\_chem\_photoly\_Thermo42iTL, Detection limit=0.10 nmol/mol [nmol/mol]



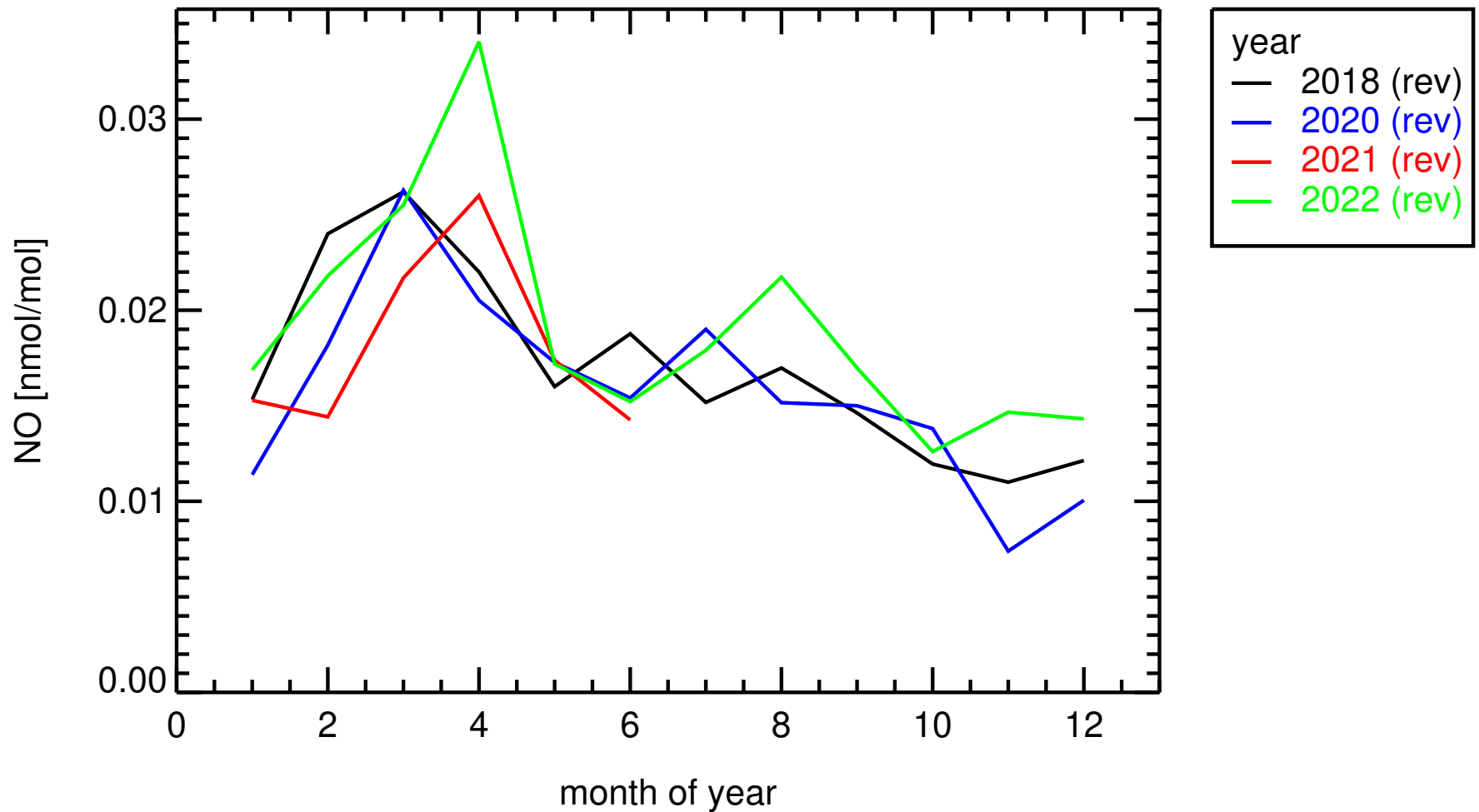
monthly medians  
IT0009R , Monte Cimone



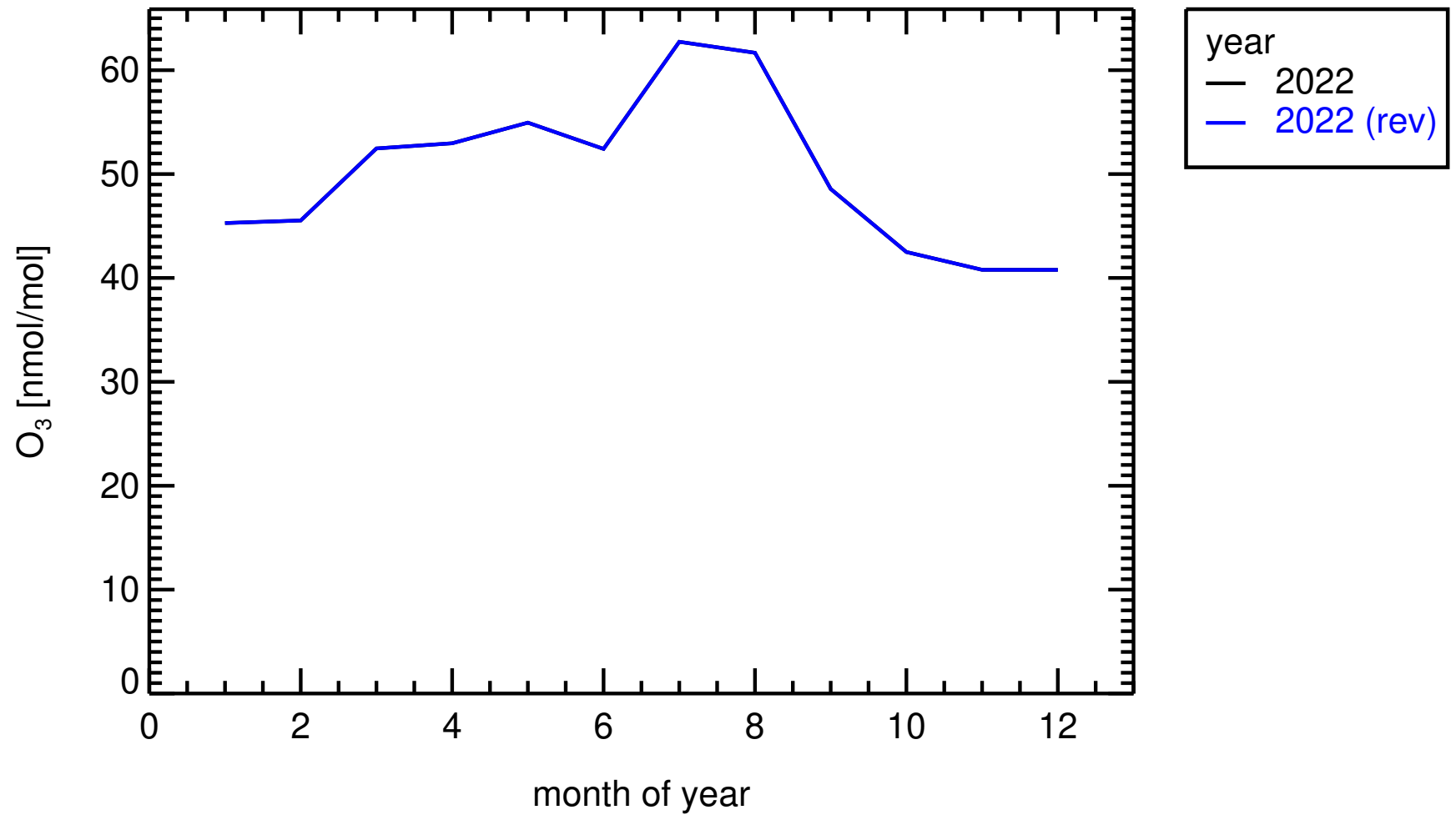
monthly medians  
IT0009R , Monte Cimone



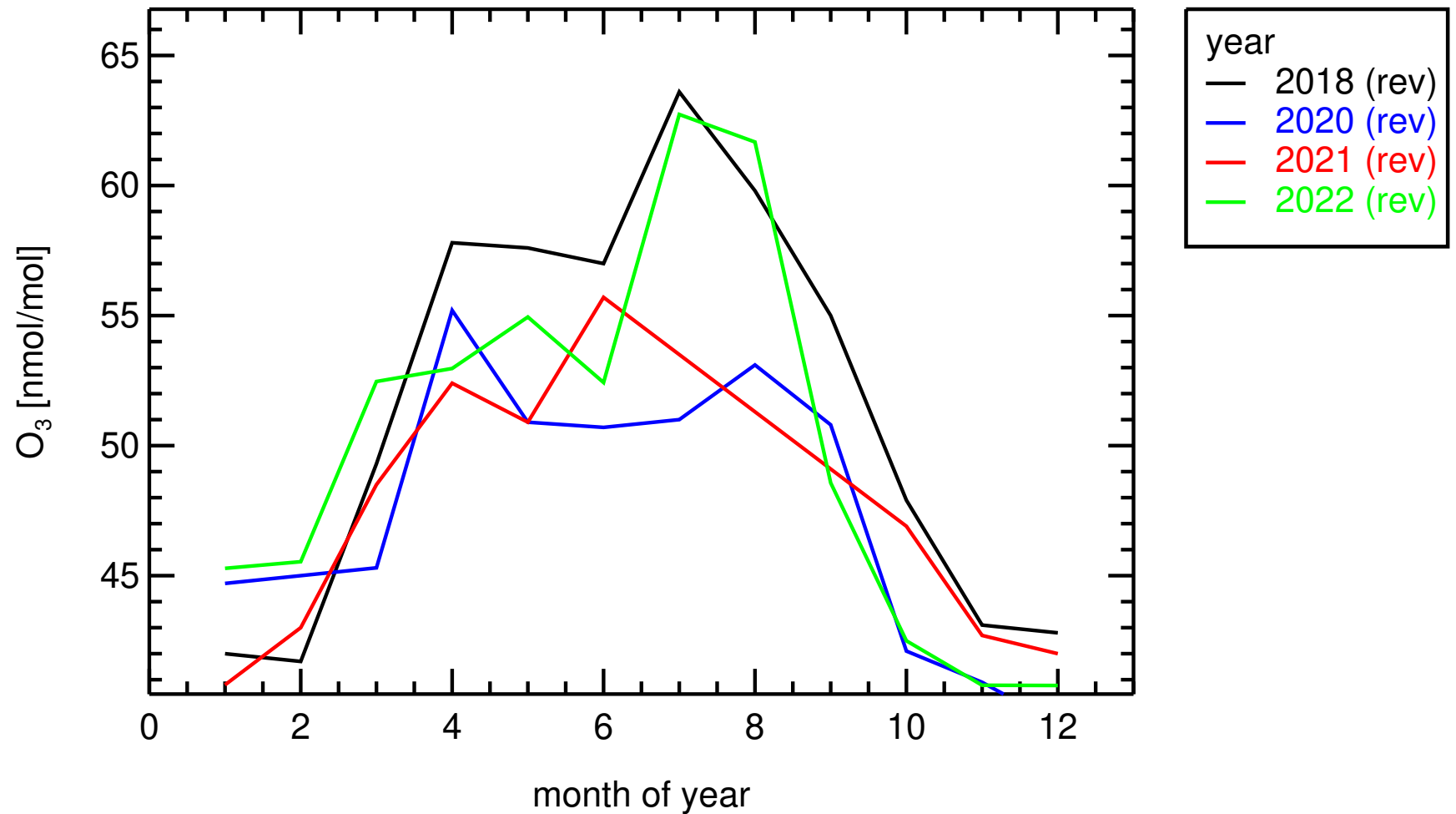
monthly medians  
IT0009R , Monte Cimone



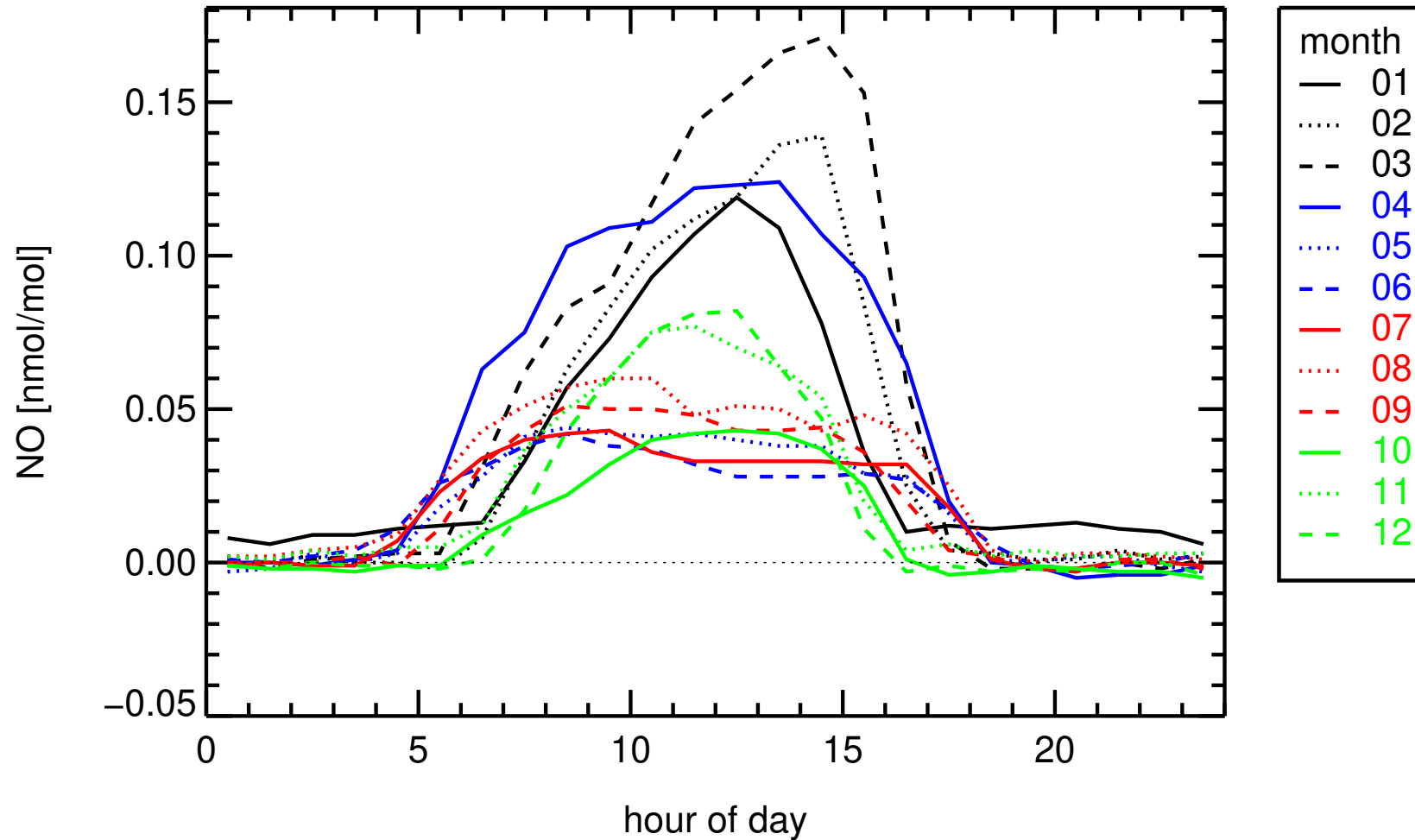
monthly medians  
IT0009R , Monte Cimone



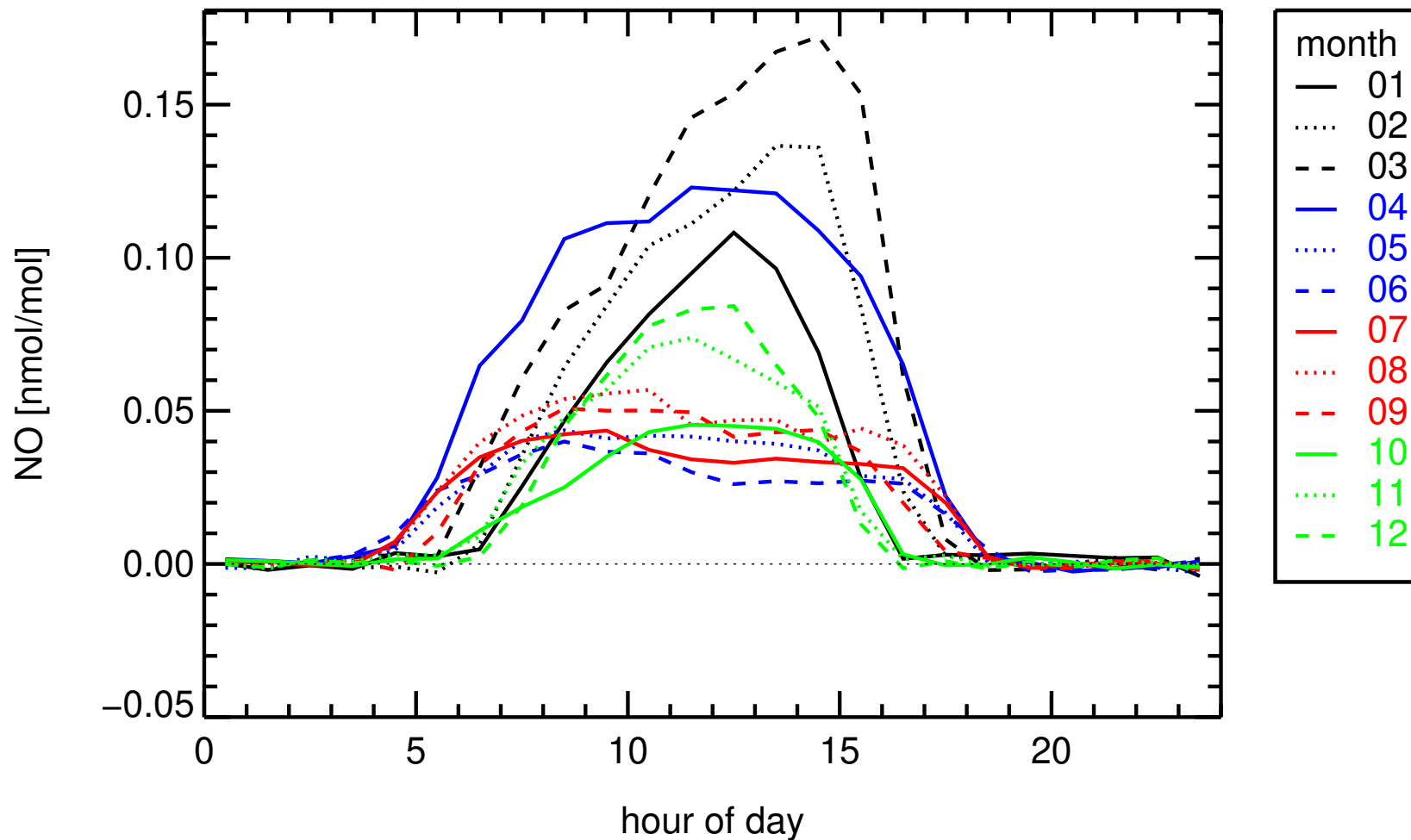
monthly medians  
IT0009R , Monte Cimone



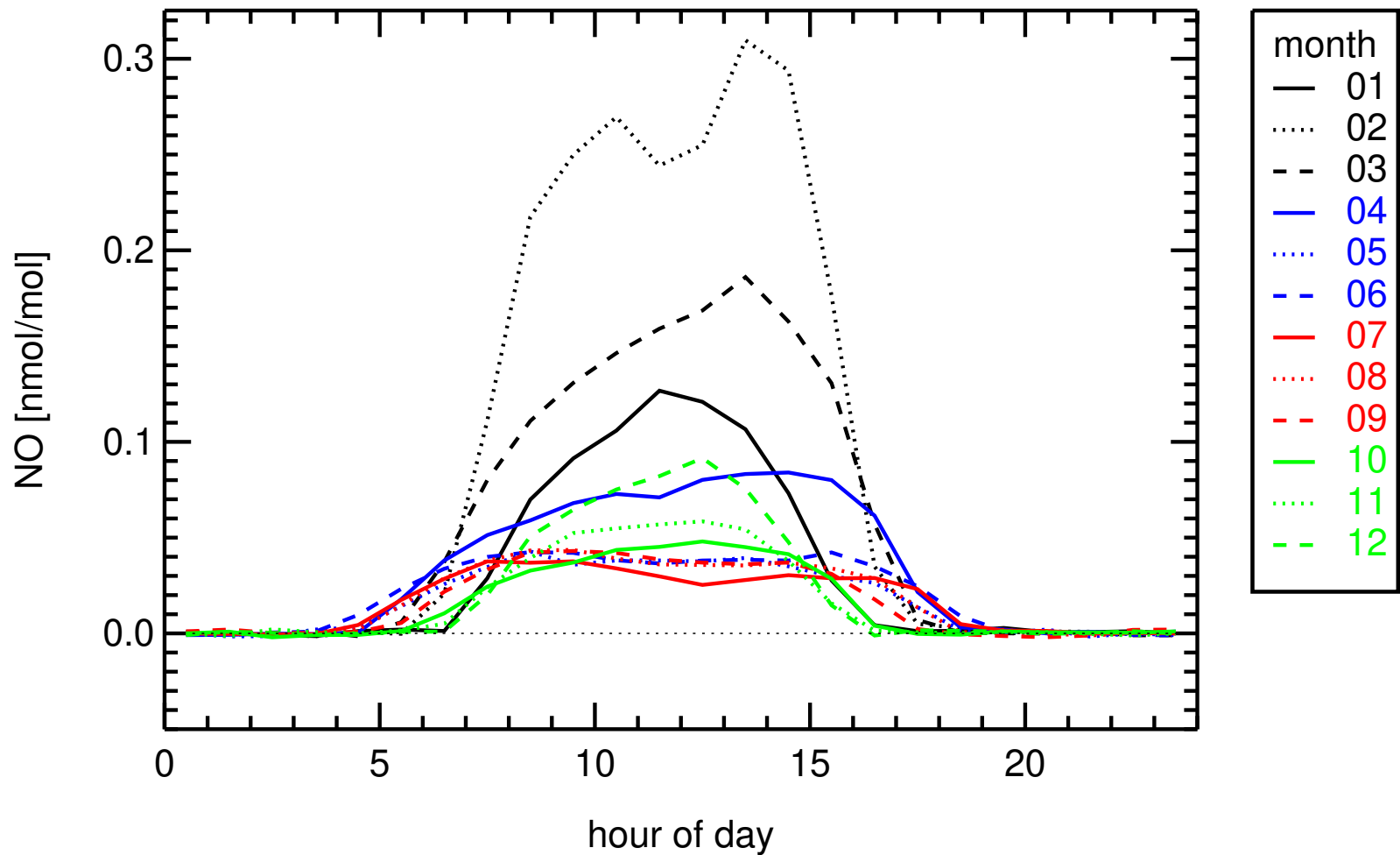
hourly medians 2022  
IT0009R , Monte Cimone



hourly medians 2022  
IT0009R , Monte Cimone (revised)

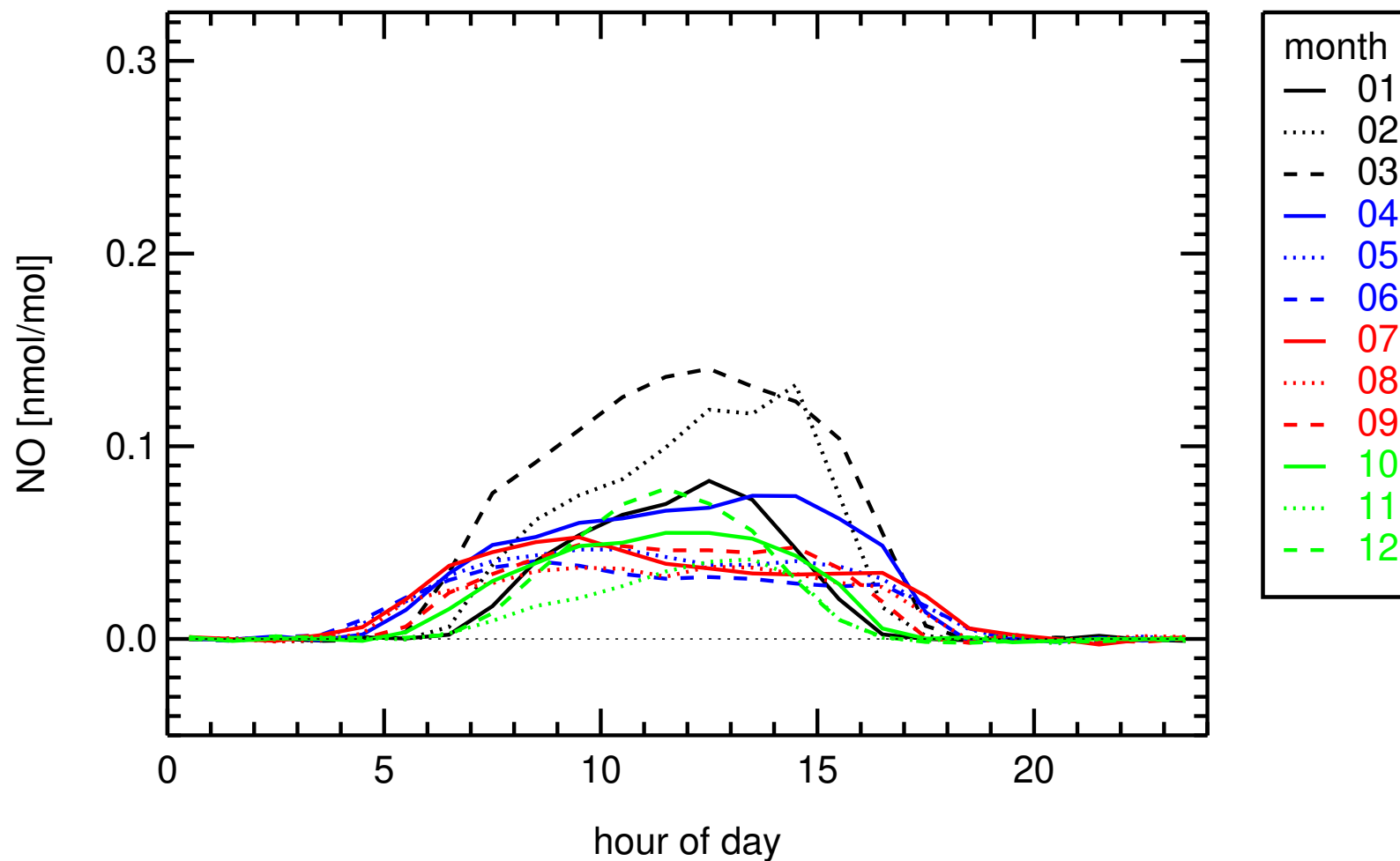


hourly medians 2018  
IT0009R , Monte Cimone (revised)

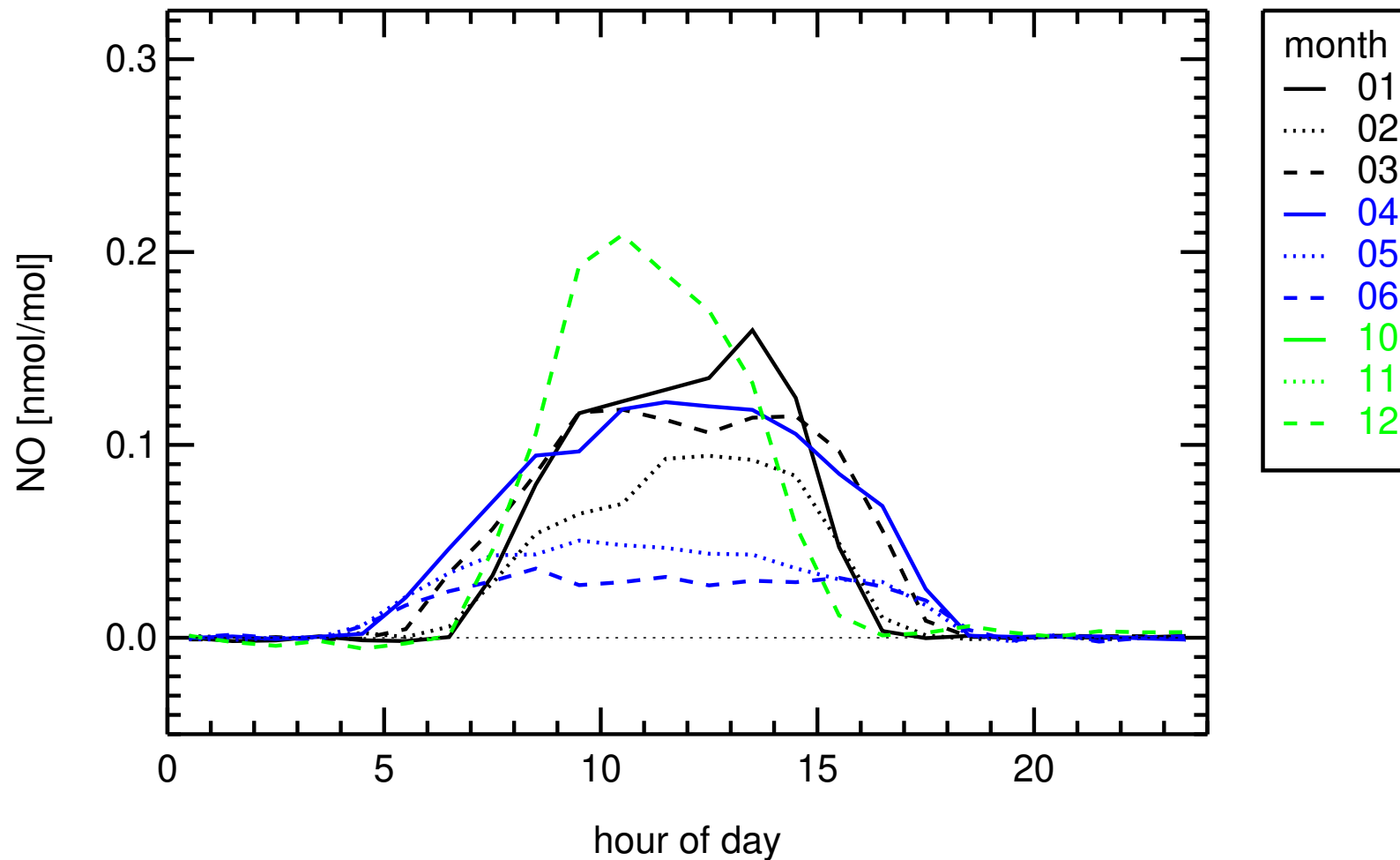




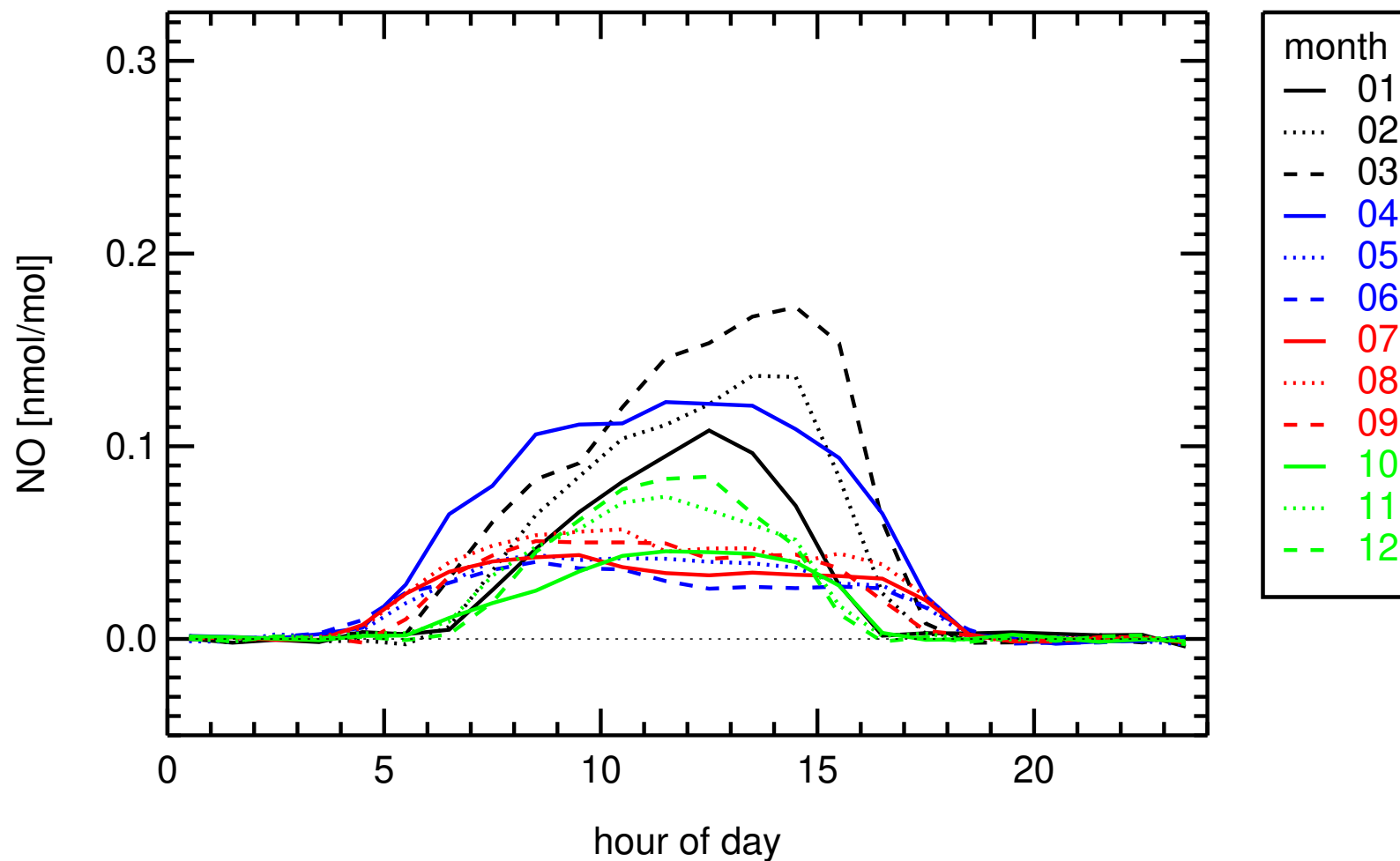
hourly medians 2020  
IT0009R , Monte Cimone (revised)



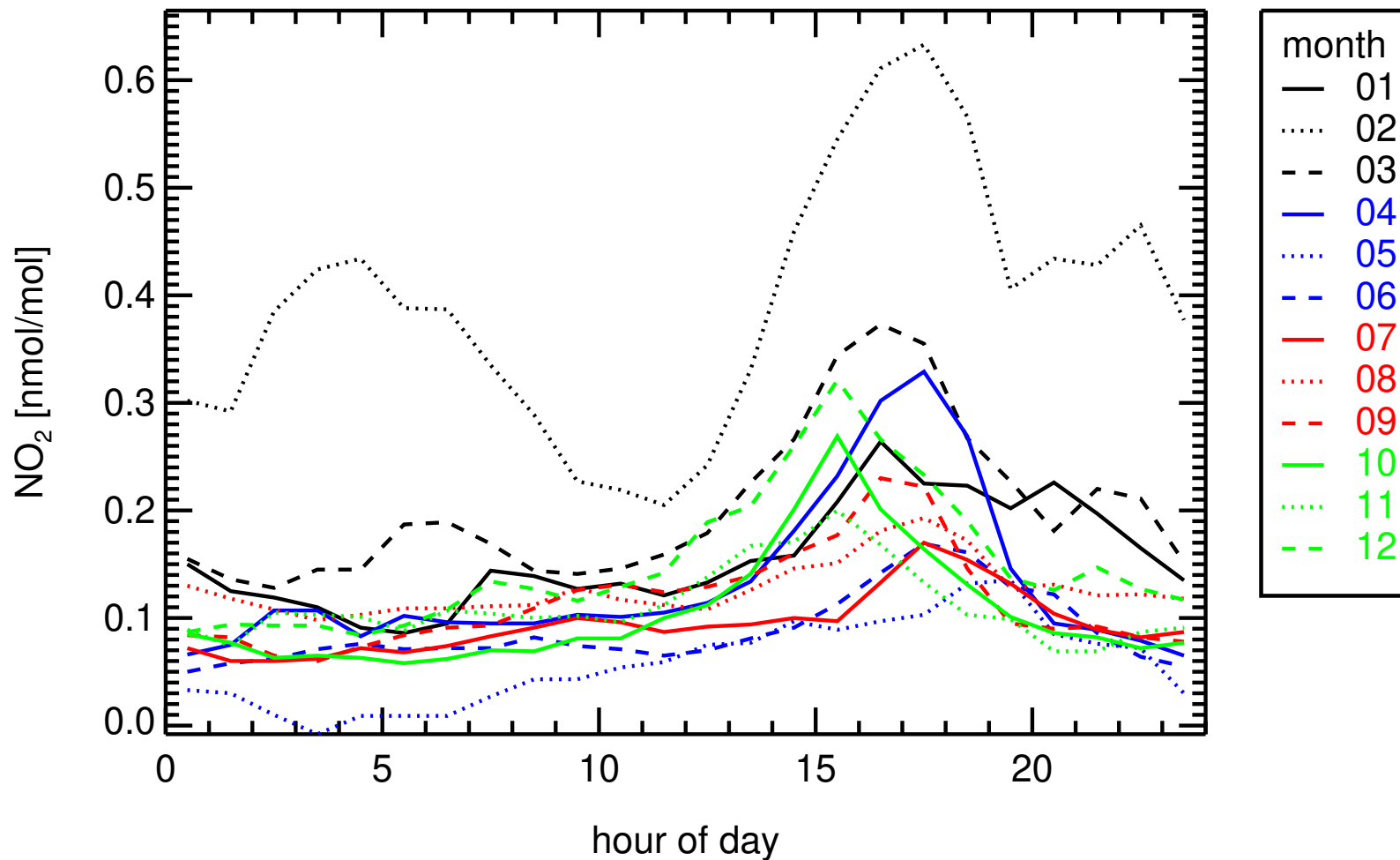
hourly medians 2021  
IT0009R , Monte Cimone (revised)



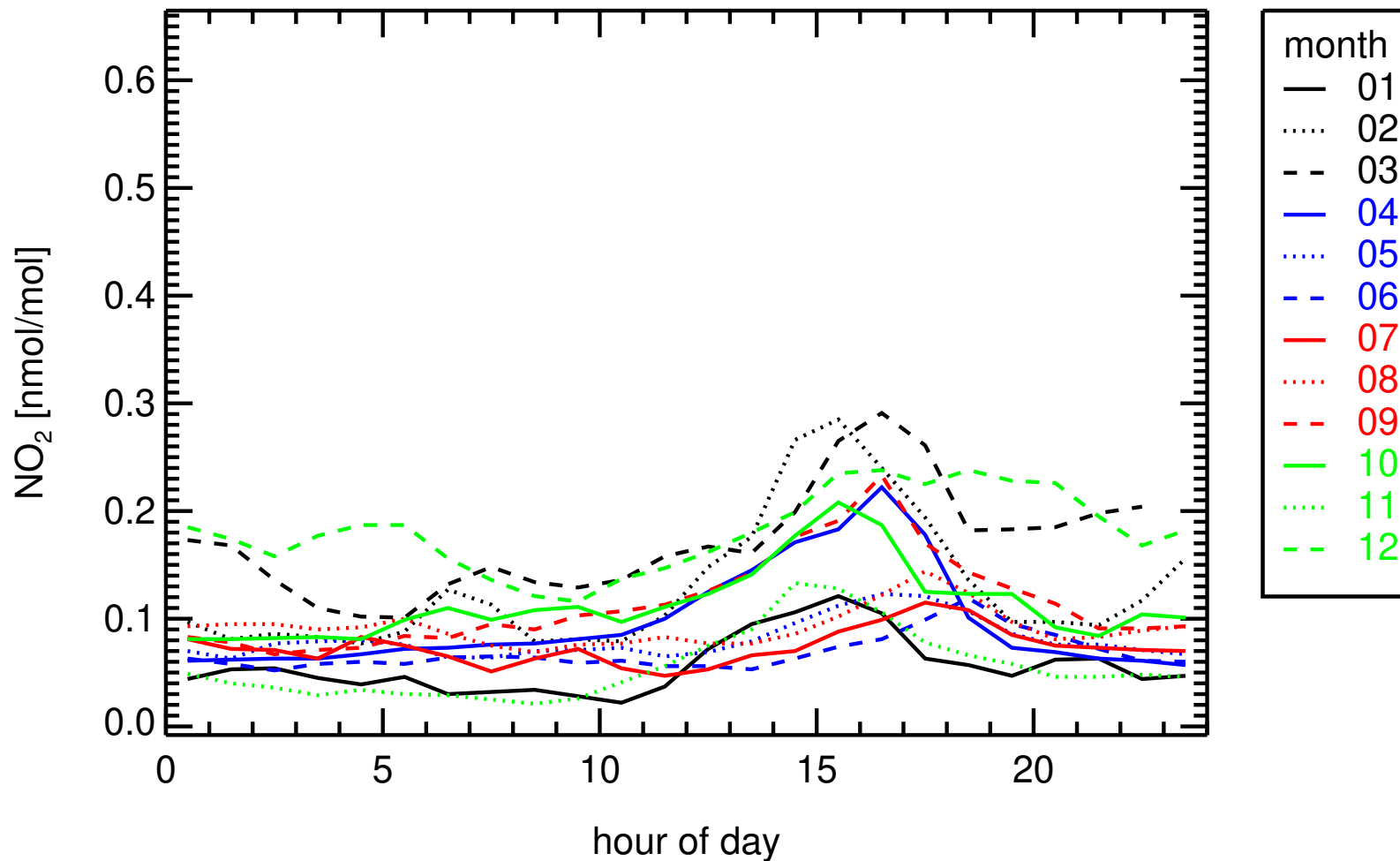
hourly medians 2022  
IT0009R , Monte Cimone (revised)



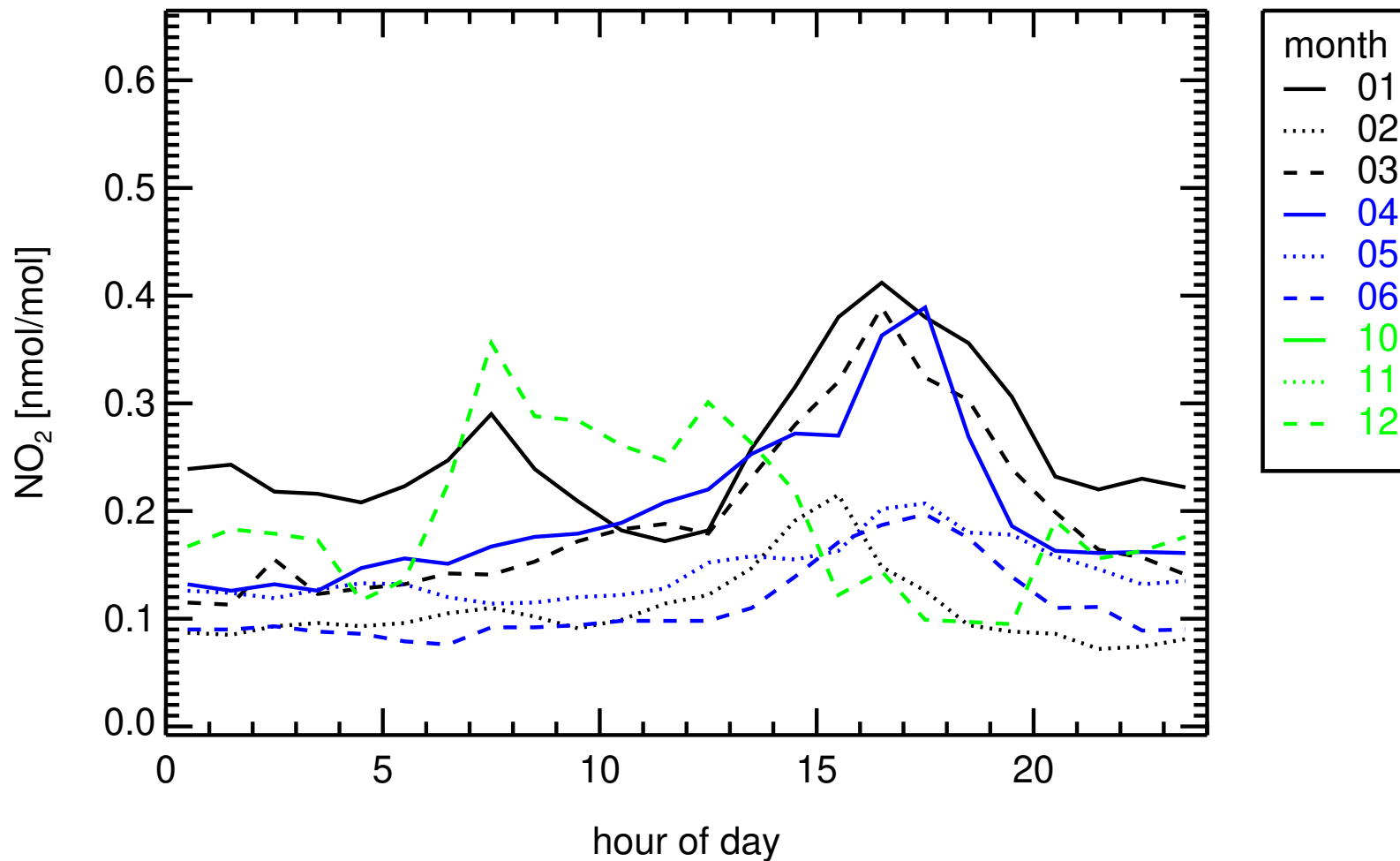
hourly medians 2018  
IT0009R , Monte Cimone (revised)



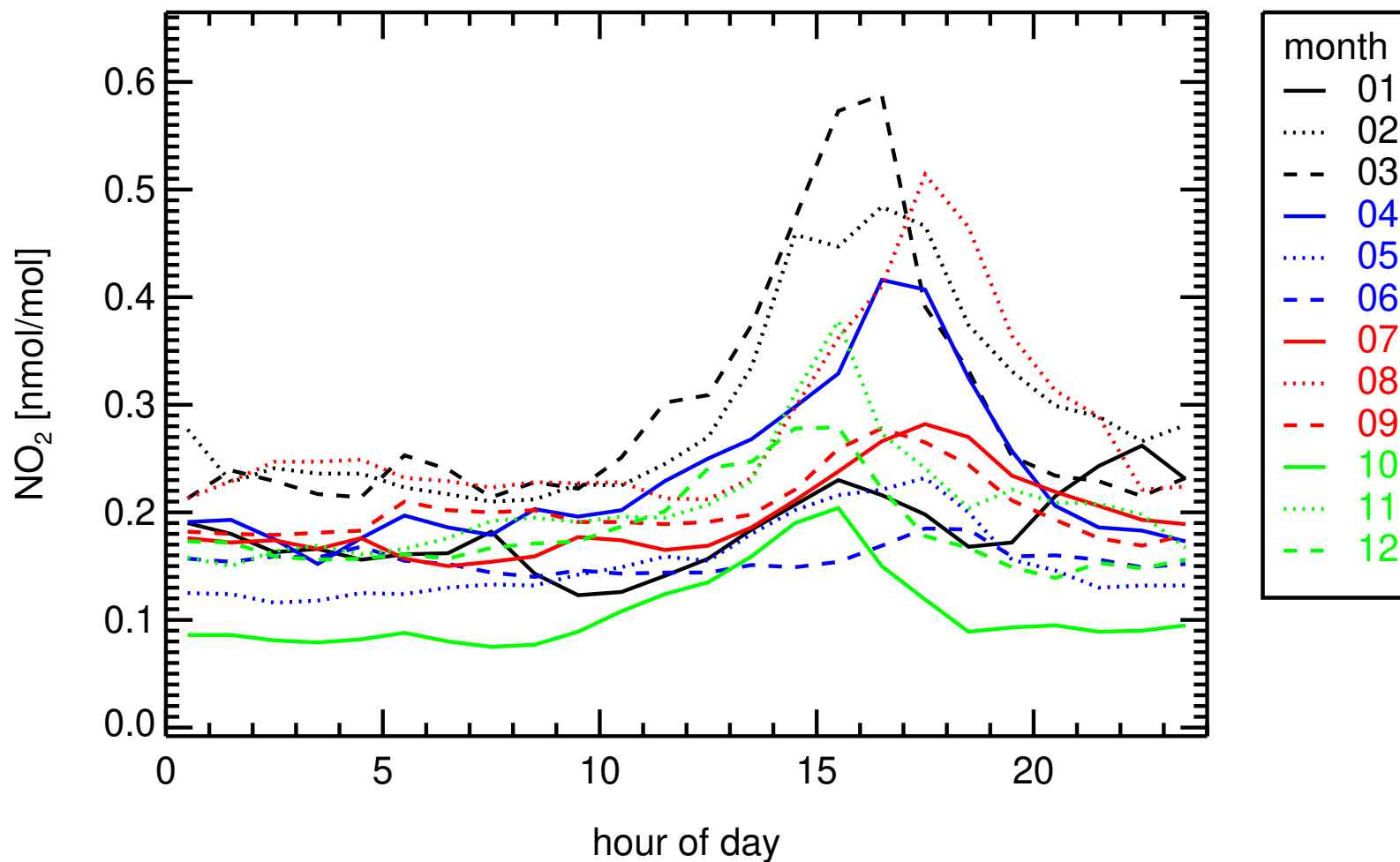
hourly medians 2020  
IT0009R , Monte Cimone (revised)



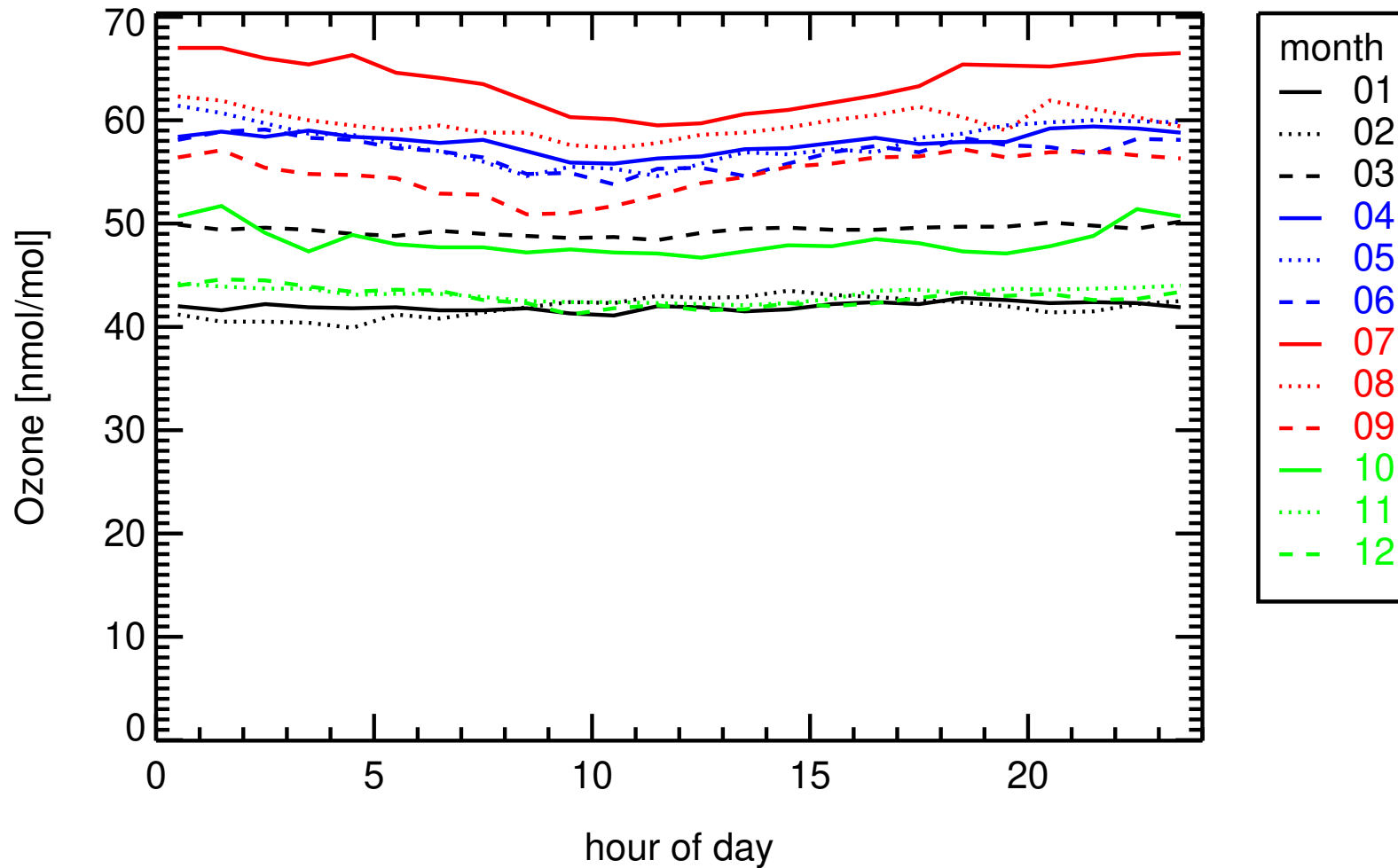
hourly medians 2021  
IT0009R , Monte Cimone (revised)



hourly medians 2022  
IT0009R , Monte Cimone (revised)

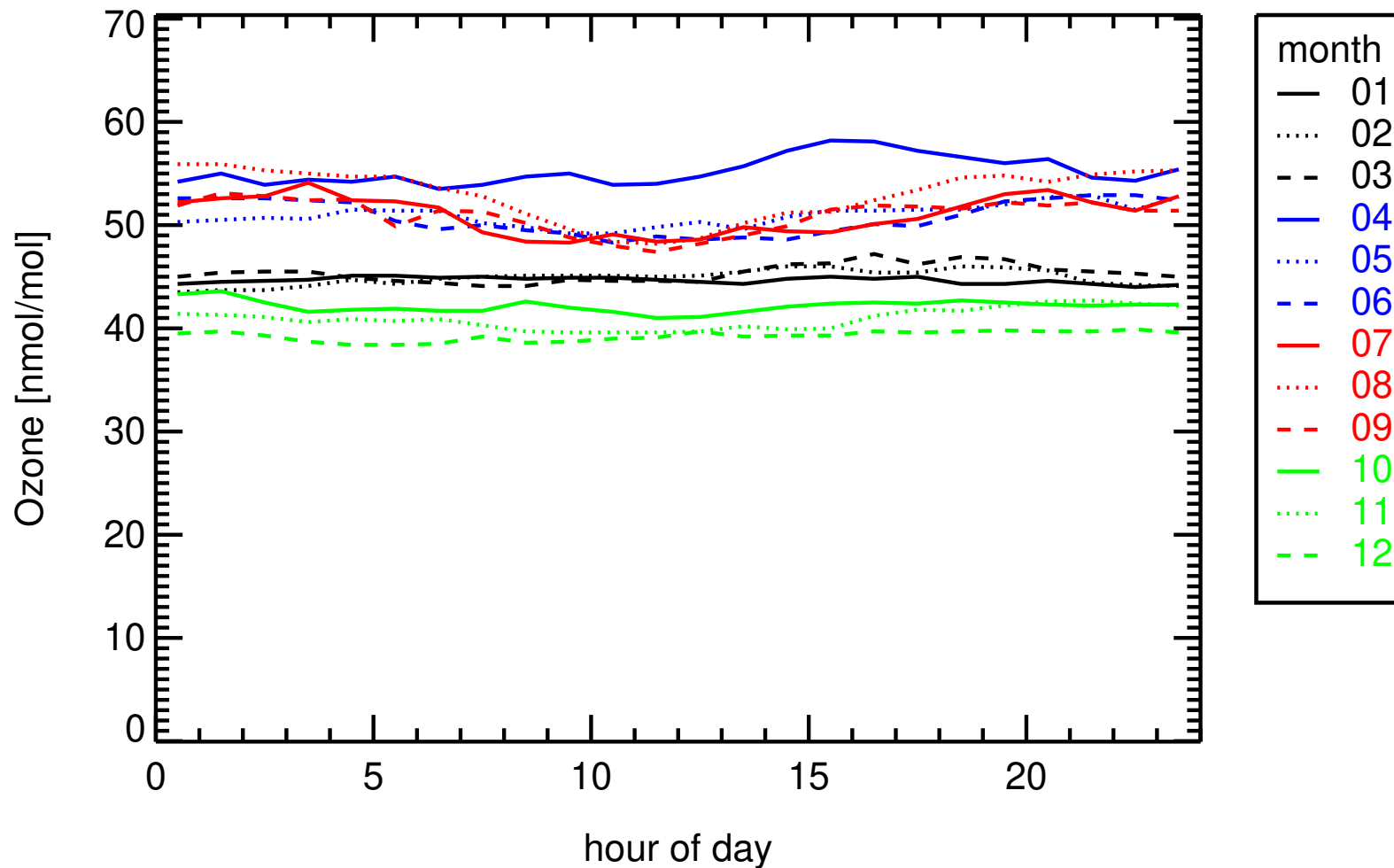


hourly medians 2018  
IT0009R , Monte Cimone

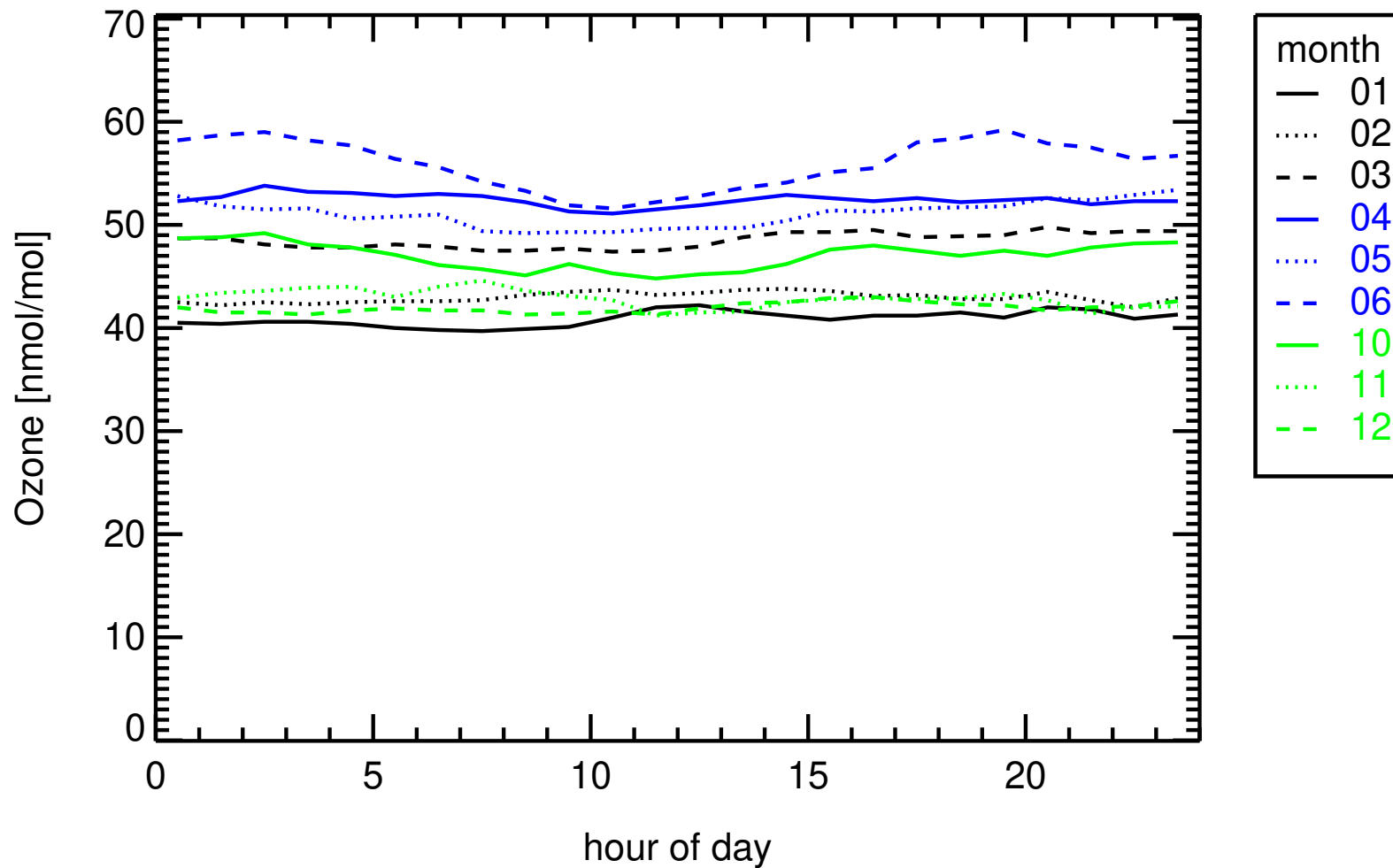




hourly medians 2020  
IT0009R , Monte Cimone



hourly medians 2021  
IT0009R , Monte Cimone



hourly medians 2022  
IT0009R , Monte Cimone

