

PUY station 1871-2022



**Puy de Dôme
Station**

1465 m

Global GAW PUY



PUY NOx Data 2022 (NOx since 2003)

Puy de Dôme (France): current status of station/instrument

Contact :

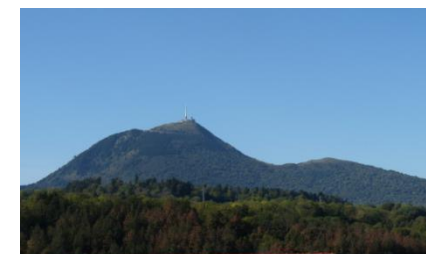
Aurélie Colomb :

aurelie.colomb@uca.fr

Jean-Marc Pichon :

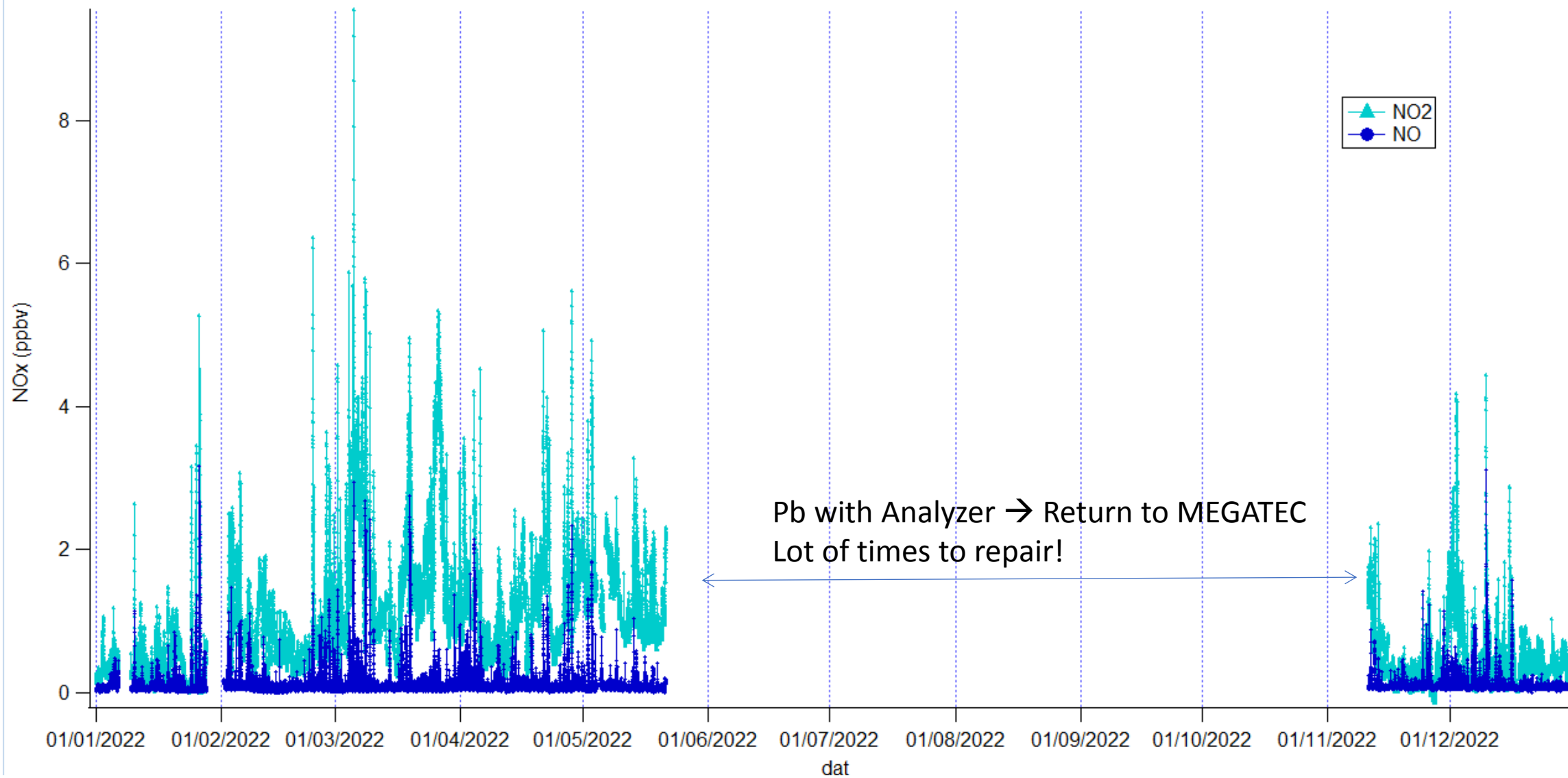
J.M.Pichon@opgc.fr

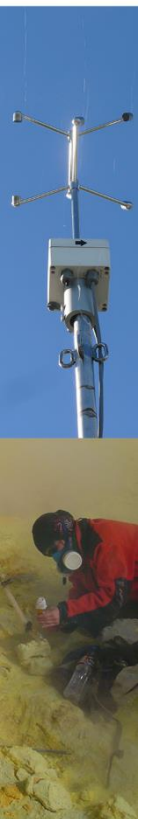
	NO	NO2
instrument/ measurement principle	TEI 42 iTL O ₃ chemiluminescence	TEI 42 iTL Molybdenum converter due to BLC breakdown in december 2019. → CAPS N500 since nov2020
scale	Messer (5.07 ppm ppm in N ₂) + dilution to 41 ppbv of NO	
calibration interval (Manual calibration)	1 x / month, 1 blank x /week	1 x / month, 1 blank x /week
quality checks	check of chamber temp, pressure, flow, lab journal (in written form), blank every week	





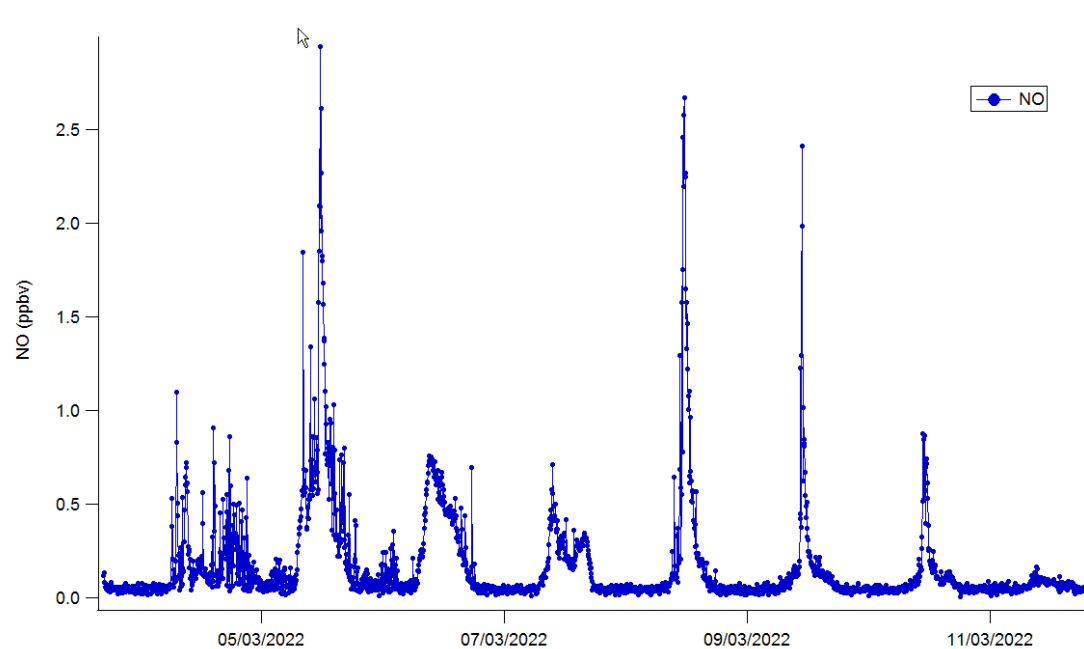
PUY 2022 - NOx



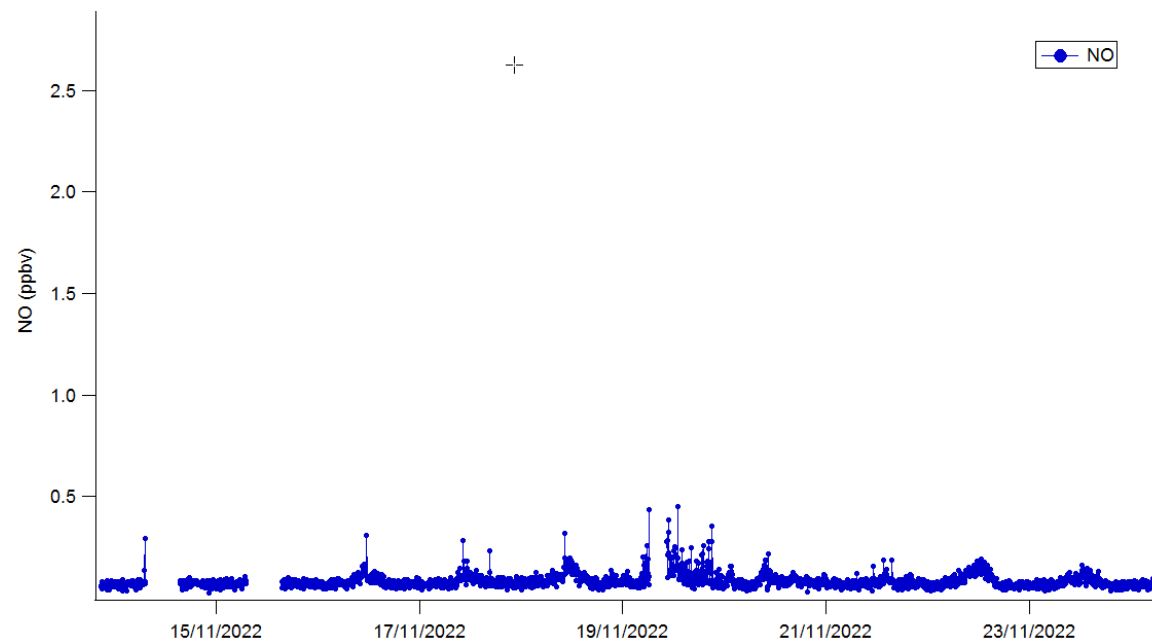


PUY 2022 - NOx

Diurnal Variation of NO depending of the PBL, slope wind and wind direction



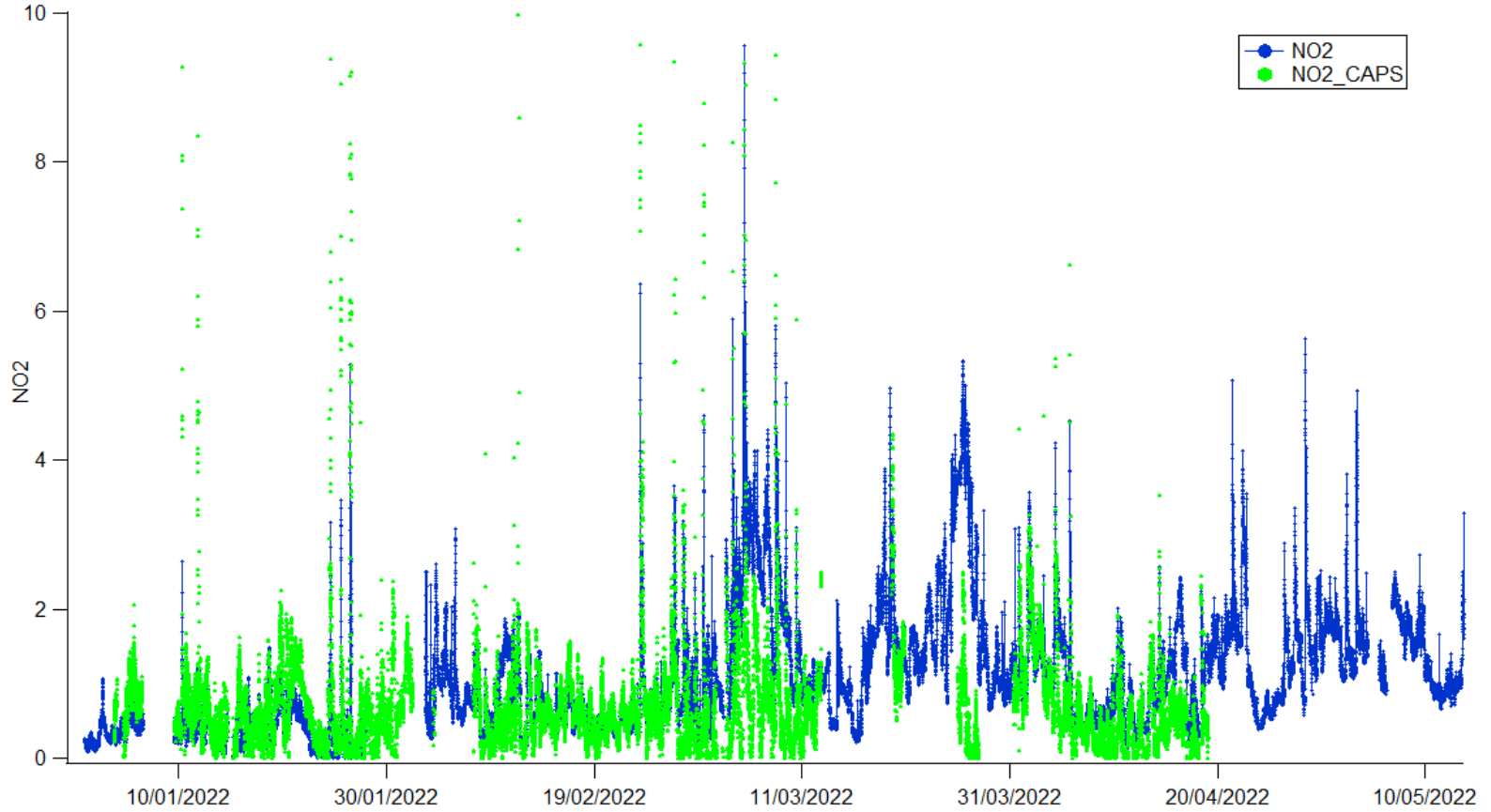
March 2022

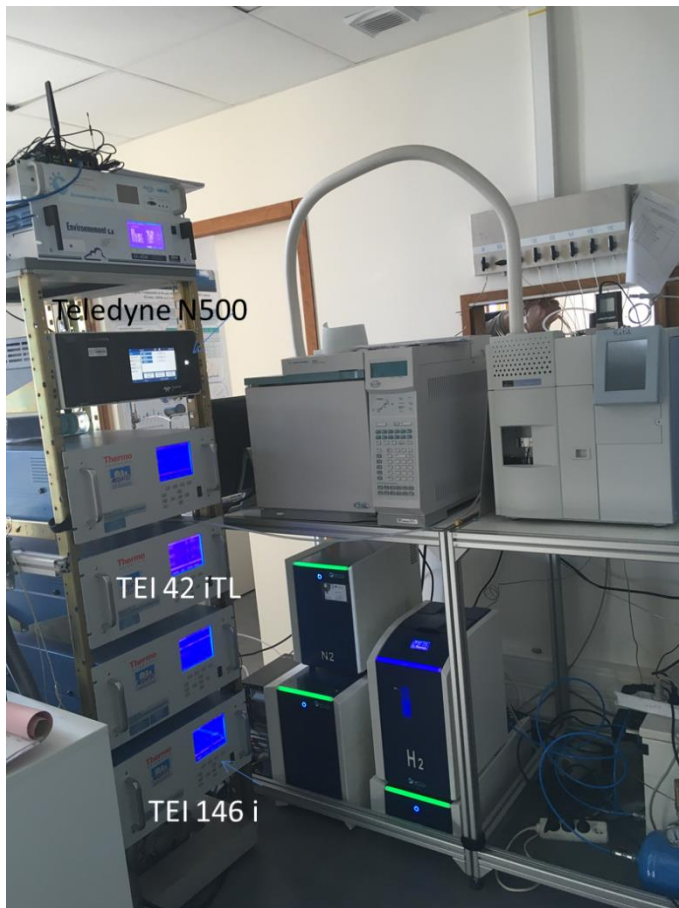


November 2022

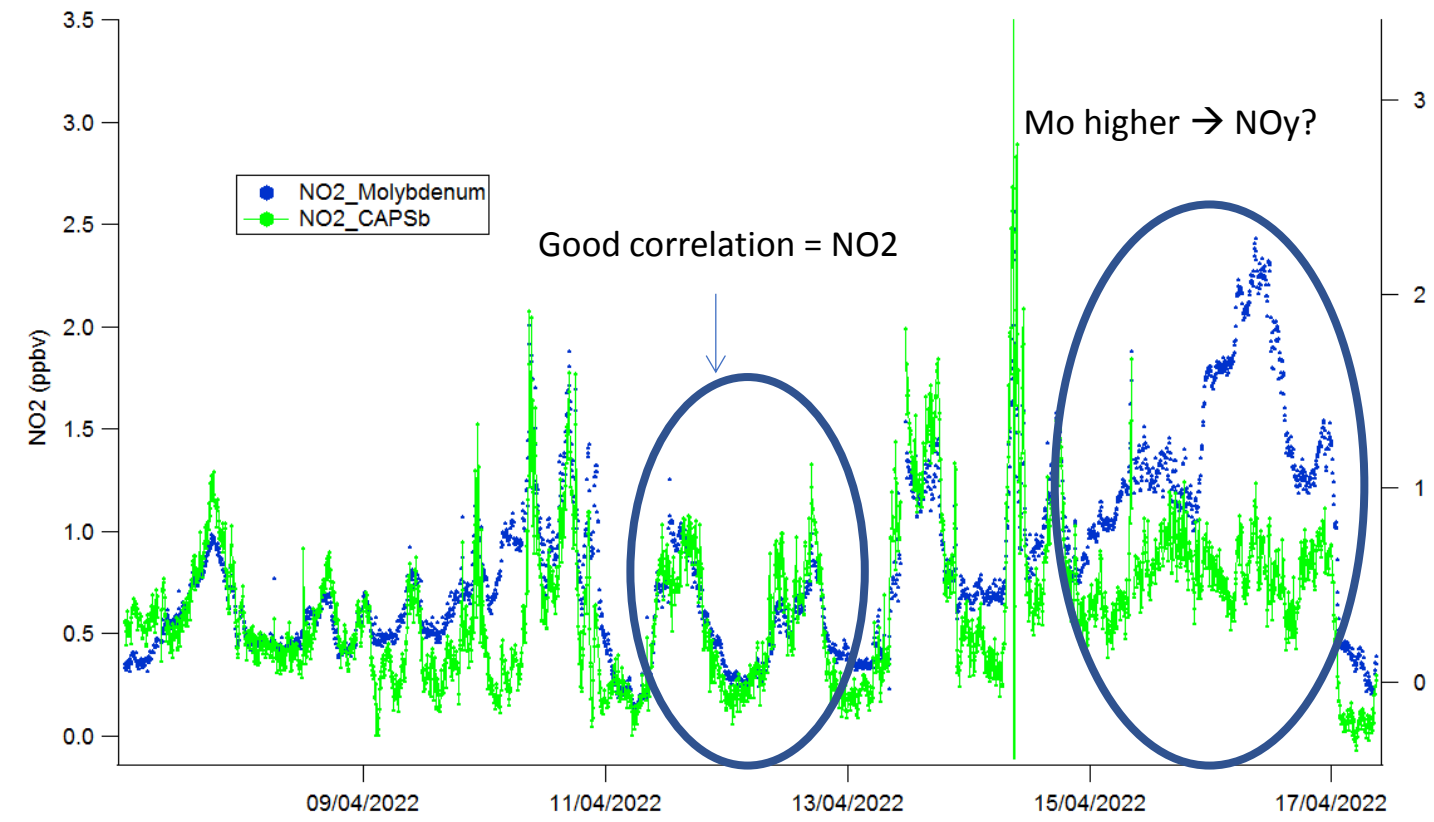


NO2_CAPS // NO2_Molybdenum

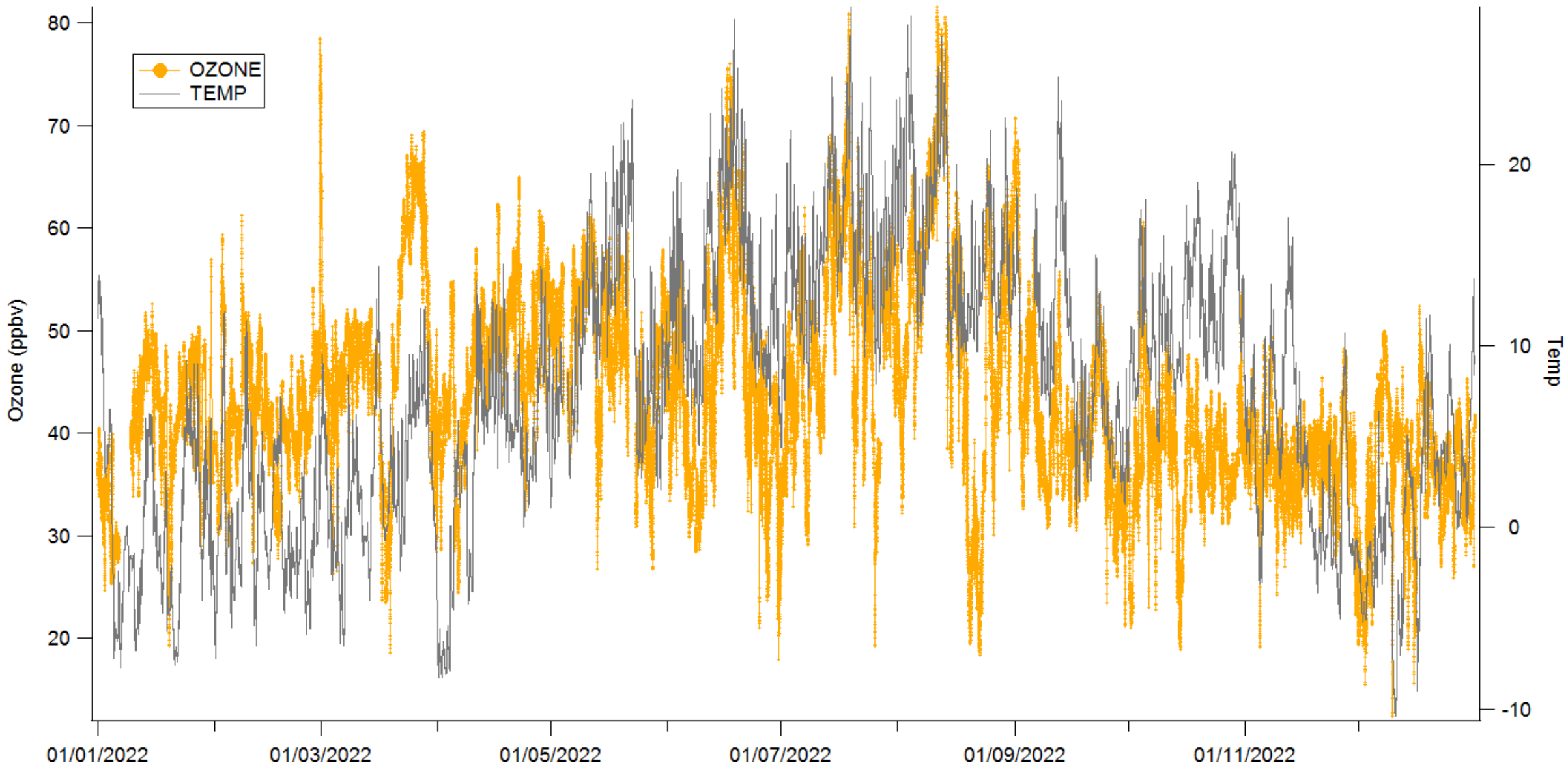




NO2_ Molybdenum // NO2_ CAPS



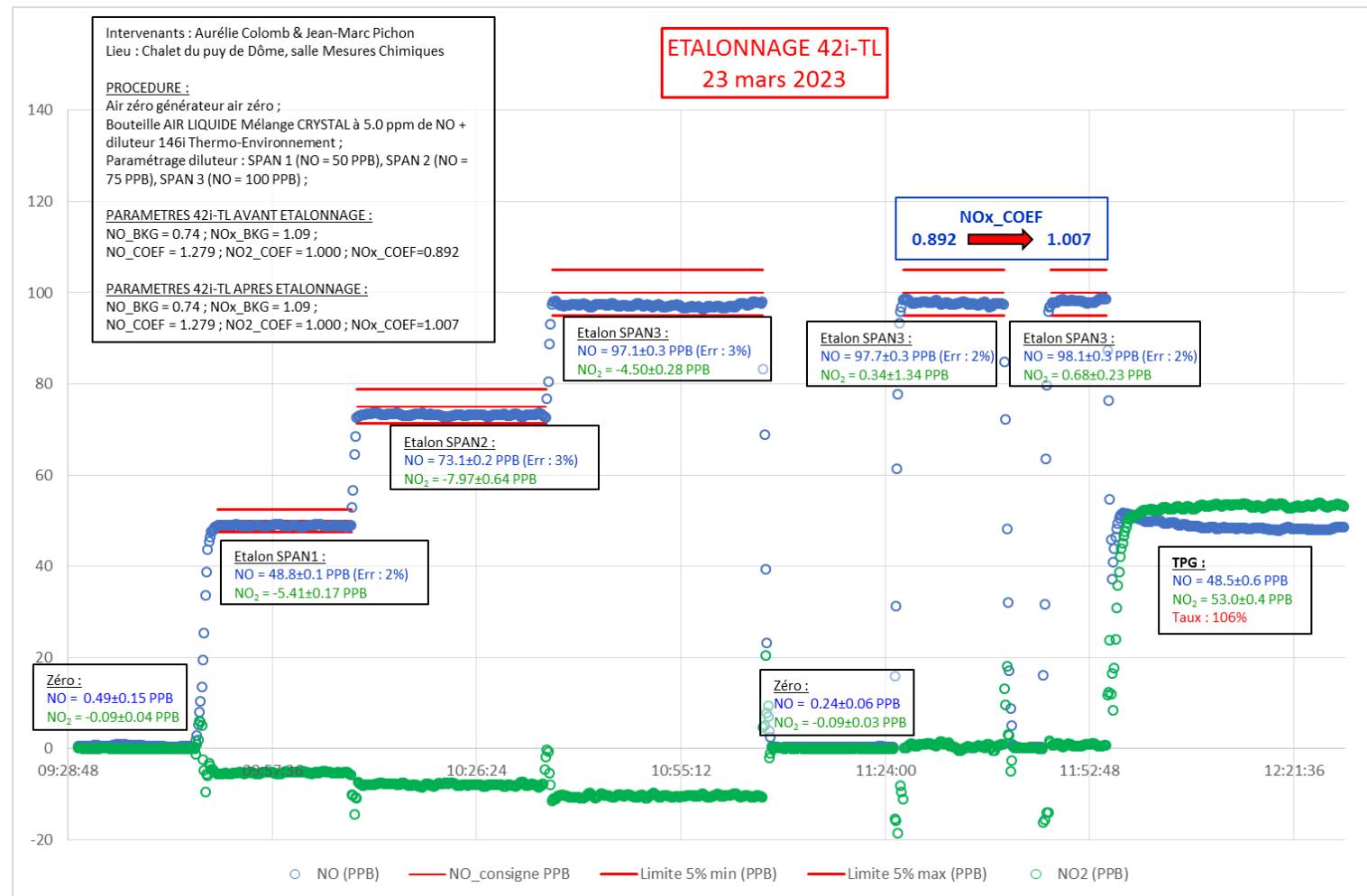
PUY 2022 – ozone and Temp



Calibration using TEI 146 i and a bottle of 5 ppm containing NO.



Example of NO calibration with TEI 42 iTL





News :

- **NEW Teledyne T200UP**
- **→ Installation mai 2023**

- **→ Intercomparison from June 2023 : N500 and Teledyne T200UP**

